

TOTAL SOLUTIONS PROVIDER OF GLUING & INSPECTION SYSTEMS TO THE

HOT MELT PACKAGING INDUSTRY



ecostitch™
VALCO MELTON

WHO WE ARE

Valco Melton is a world-leading manufacturer of hot melt and cold glue adhesive dispensing equipment and quality inspection systems.

Combined with our commitment to providing unparalleled customer service, we offer one of the largest support networks with a team of knowledgeable sales and service personnel working to provide personal assistance with installations, troubleshooting, and support of installed equipment in over 96 countries worldwide.

Designed to operate in industrial hot melt applications, with a special focus on the food & beverage industries, Valco Melton's EcoStitch™ technology ensures your cartons are glued more efficiently, more effectively, and with much greater consistency. Featuring a hot melt applicator, a valve driver and an adhesive melter, the all-electric triad allows the manufacturing process to run without downtime and needless part changes due to wear items.



THE POWER OF ECOSTITCH

EcoStitch is the all-electric, hot melt gluing solution that has revolutionized the packaging industry.

BENEFITS


- 1.** Return on investment in as little as 4 months
- 2.** Reduce adhesive consumption by 40-70%
- 3.** Elimination of plant air from system operation
- 4.** Improve OEE and minimize TCO
- 5.** Minimize downtime due to glue system failure
- 6.** Significantly reduce parts changes/consumption

ADHESIVE SAVINGS

Valco Melton's EcoStitch solution can help you reduce adhesive usage by applying precision dots. The unique Dot Count, Dot/Gap, and Stitch Percentage features will reduce adhesive usage while improving the bond quality.

Reduce adhesive consumption by 40-70%

*Dependent on current usage



Adhesive Audit: [REDACTED]
Project Manager: [REDACTED]

Existing Pneumatic Equipment		Valco Melton EcoStitch Solution	
Line1 Brenton Cartoner		Line1 Brenton Cartoner	
Description of Valves Sampled	Total (g)	Description of Valves Sampled	Total (g)
Sample 1	0.62	Sample 1	0.18
Sample 2	0.71	Sample 2	0.18
Adhesive Total (Bead samples):	1.33	Adhesive Total (Stitch samples):	0.36
# of units sampled:	2	# of units sampled:	2
Total Adhesive Consumption per Carton:	0.67	Total Adhesive Consumption per Carton:	0.18

Adhesive Savings per carton			
	Pneumatic Bead	EcoStitch	Savings
	0.67 g	0.18 g	0.49 g 72.93%

Pneumatic unit total - EcoStitch unit total = difference in adhesive consumption.

ROI Parameters

<u>Cost and Consumption</u>	<u>Production output</u>
System Cost: \$ [REDACTED]	Days/week: 7
Adhesive Cost (per lb): \$ [REDACTED]	Hours/day: 24
	Weeks per year: 46
Adhesive consumption per sample	Units per minute: 33
Bead: 0.67g Stitch: 0.18g	Units per week: 332,640

ROI Calculations							
	Units/week	Grams/sample	Grams/week	Grams per lb	lbs/week	cost/lb	Adhesive cost/week
Pneumatic	332,640	0.67	221,205.60	453.59	487.68	\$ [REDACTED]	\$ [REDACTED]
EcoStitch	332,640	0.18	59,875.20	454.59	131.71	\$ [REDACTED]	\$ [REDACTED]
Adhesive cost savings per [REDACTED]							\$687.01

Cost of equipment	\$ [REDACTED]
Weekly adhesive savings	\$ [REDACTED]
Week ROI	10.12
ROI in	2.33 Months

A Valco Melton sales representative will audit adhesive usage before and after installation and provide data as part of your system installation.



Traditional Bead



EcoStitch Dots

DYNAMIC SEALS

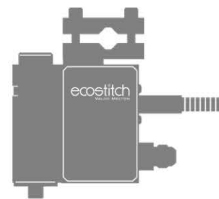
EcoStitch electric valves and gear pumps remove almost all dynamic seals required to run a pneumatic system. This instantly improves machine uptime and reduces the chance of failure created by too many moving parts.

ECOSTITCH SOLUTION

1 DYNAMIC SEAL



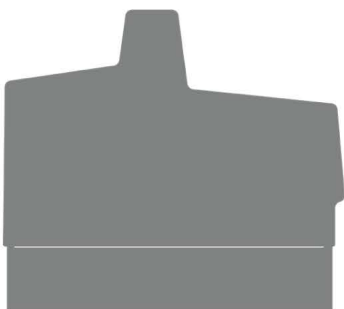
Melter: **1** Dynamic Seal



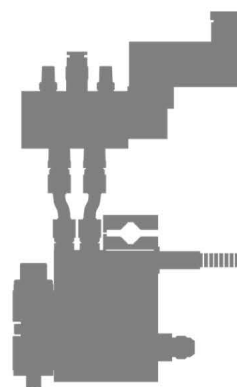
Valve: **ZERO** Dynamic Seals

TRADITIONAL PNEUMATIC SYSTEM

27 DYNAMIC SEALS



Melter: **10** DYNAMIC SEALS



Solenoid: **12** Dynamic Seals



Valve: **5** Dynamic Seals

 = Dynamic Seal

The elimination of dynamic seals are a primary reason why EcoStitch valves are more accurate and last significantly longer than industry standard pneumatic valves.

EcoStitch valves are rated for 2 billion cycles*

**Field and lab tested. Operating conditions may affect results.*

CARTON SEALING & ERECTING

Designed for high-speed carton sealing and erecting, our MXM valves are capable of accurately applying precision dot patterns at cycle rates as fast as 2.1ms while maintaining long life cycles and reducing adhesive consumption.

Product offerings include: Applicator conversion kits, full system kits, and OEM conversion kits



Single or Dual Module

45-55% Glue Savings

OEM's we've installed on include:
Adco, Syntegon, Bradman Lake, RA Jones,
Serpa, Westrock, Graphic Packaging

CASE SEALING & ERECTING

Valco Melton provides hot melt gluing solutions for all types of corrugated case erecting applications. Our solutions are fully compatible with other manufacturers' equipment, so you can increase your efficiency without having to overhaul your entire line.

Product offerings include applicator conversion kits, full system kits, and OEM conversion kits.



TRAY MAKING

Valco Melton's high-speed MXM valves reduce adhesive applied to beverage cartons packed in trays. Product quality is maintained at faster line speeds typically seen in tray making applications.



Single or Dual Module

30-40% Glue savings

PALLETIZING SOLUTIONS

Minimize product damage before, during, and after transportation with Valco Melton's adhesive-based palletizing systems. The palletizing systems increase overall line efficiency by avoiding unnecessary costs related to stretch film wrap such as material, disposal, and intensive labor.

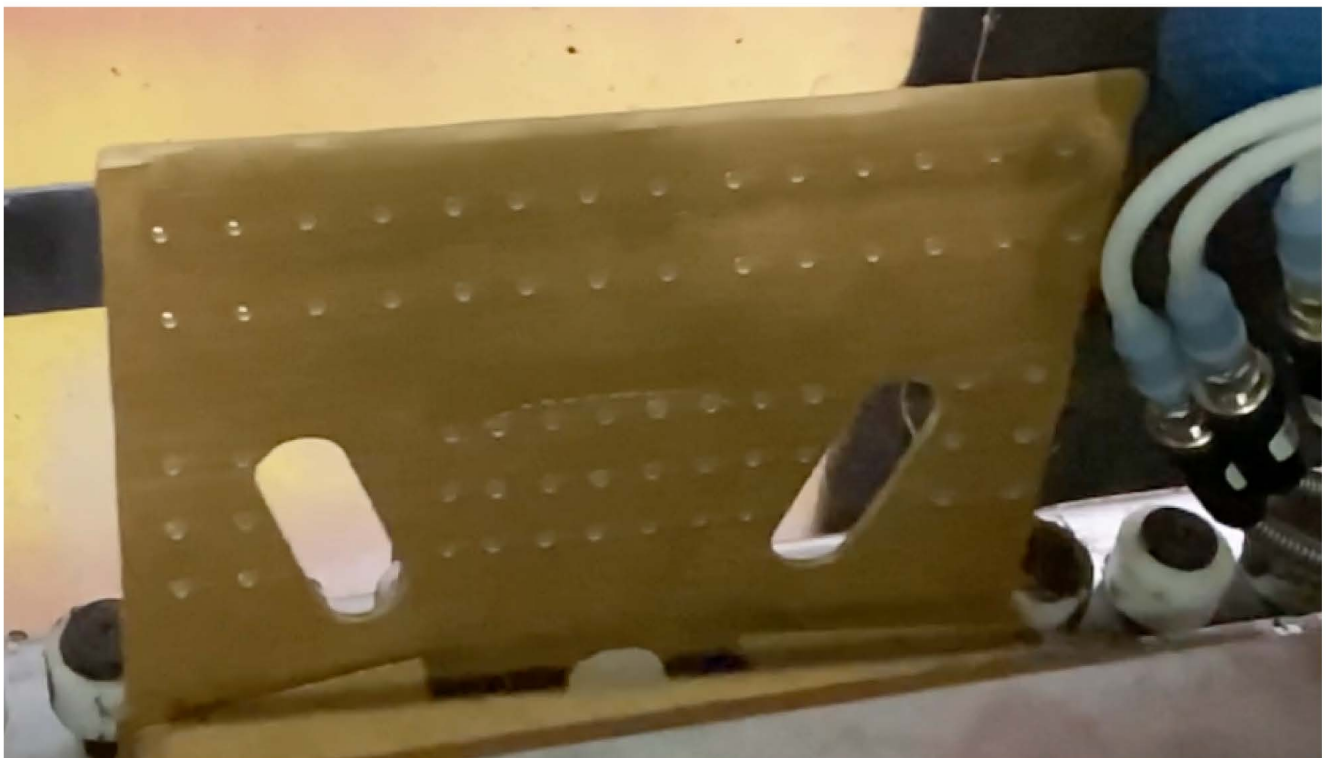


- Complete pallet stabilization system for load locking cartons and bags using squirt or spray methods.
- Great savings in material and labor costs over stretch film palletizing systems.
- Adhesive bonds prevent heat and moisture from damaging the packaged goods - even during long storage periods.
- Bolt on and go.
Just mount to your conveyor and connect to electrical supply.
- No restrictions.
Operates in any orientation.



BAG IN BOX SOLUTIONS

Valco Melton can customize valve designs to fit any BIB application or machine type. Ecostitch can clean up the machine, minimize the cost of product, and improve overall process.



Immediately reduce your
cost per product

**REDUCES ADHESIVE
USAGE BY 50%**



ELECTRIC VALVES

Valco Melton's MXM electric hot melt valve is the workhorse for any hot melt dispensing solution. Designed to operate at extremely high speeds reaching 15,000 cycles per minute for short bursts and have a lifetime capable of reaching more than 2 billion cycles*. The MXM electric valve is used for many different applications, most notably in Food and Beverage Packaging where production uptime is essential and adhesive savings ROI is paramount.



STANDARD

Single module valve used in carton sealing and erecting as well as small tray and carton forming.



KHS V-WING CONFIGURATION

Customized for kits with side load case packs. High-speed valve ensures accurate adhesive placement.



SLOPE BACK

Single and multi-module configurations. Easily integrates into existing machine.



TOP FEED

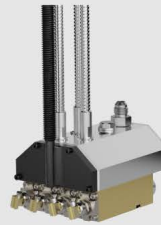
Features a slim, compact design uniquely configured for wrap around case packers and anywhere space is limited.



MULTI MODULE CONFIGURATIONS

Customizable to the number of valves or spacing your application requires.

Nearly any configuration is possible and easily adaptable to your existing machine.



LOW PROFILE

Commonly used in case erecting and sealing applications where the flaps of the carton or case close while glue is being applied.

Also available in multi-module setups with dual and quad module configurations.



WASHDOWN RATED VALVES

All standard, multi-module, and low profile valves are available in a washdown configuration for use with water wash or wet environment heated hoses.

Immersion tested and elastomeric seals ensure water tight connections.

**Operating conditions may affect results.*

MELTERS

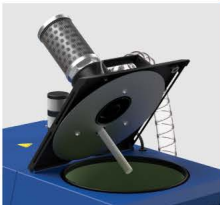
Valco Melton's EcoStitch HMU's are our most advanced melters featuring ethernet IP integration, digital pressure control, adhesive usage data on screen, and full OEM integration with digital based data.



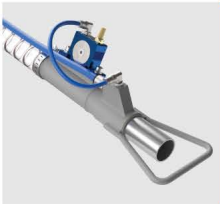
EcoStitch Hot Melt Units are available in 4L, 10L, and 16L capacities

AUTO-FEED VACCUUM SYSTEM

Valco Melton's Auto-Feed System automatically maintains the adhesive level of your connected hotmelt unit while preventing debris from entering the system. Auto-feed systems offer operator safety and time-efficiency to your production floor by reducing loss of time, and additional labor costs associated with manual refilling processes.



A specially designed lid assembly includes a probe to measure and maintain the adhesive level.



Close-loop pressure control: track line speed and adjust pout pressure based on pressure curve.



Optional visual and audible alarm for confirmation of filling.



VALVE DRIVERS

VD2 drivers integrate into any existing machine and provide the EcoStitch dot and gap control to regulate adhesive usage. Each valve can be individually programmed for a specific dot size and gap offering unparalleled flexibility to achieve maximum adhesive savings while achieving best bond quality.



VD2-E VALVE DRIVER

- Capable of operating up to two electric valves
- Two inputs for independent valve activation



VD2-P VALVE DRIVER

- Ethernet I/P connectivity, for integration with the parent machine PLC
- Scalable from 2 to 12 valve outputs

FEATURES

- Full electronic control over adhesive volume
- Four user-selectable operating modes
 - Dot/gap, dot count, bead mode, or stitch percentage
- Dot pattern, not a series of short stitches
- Activates valves based on input signals from the parent machine
 - Existing recipes are unchanged

ENCLOSURES

Floor or wall mount if there is no room inside of existing PLC cabinet



RUGGED HOSES

The RUGGED hoses from Valco Melton bring a new definition of durability, longevity, and overall quality to the hot melt hose supply industry. Valco Melton has been manufacturing hot melt hoses for over 40 years and are now introducing the hose that's more durable and industry tough than any that have come before it.



Clip Guard ensures hose electrical connection doesn't come off of melter

Compatible with all Valco Melton and industry Standard melters

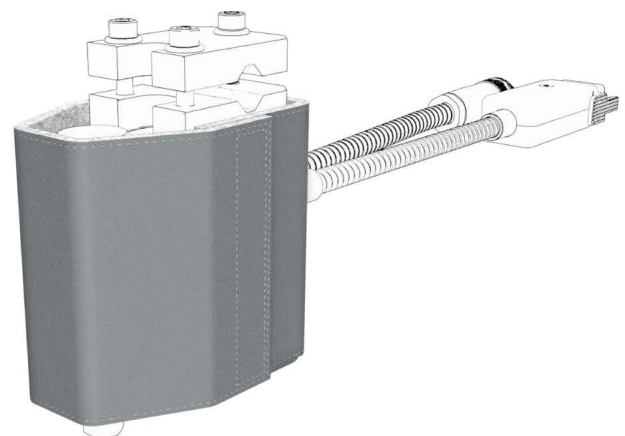


RUGGED corrugated plastic flex cover protects against water, zip tie hot spots and wear points

INSULATING COVERS

Insulating covers for valves and fittings

- Heat retention of components
- Burn prevention for Operators and
- Maintenance personnel



MAKE QUALITY VISIBLE WITH CLEARVISION'S

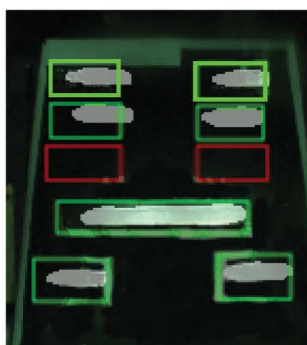
PACKCHEK

QUALITY ASSURANCE & VISION INSPECTION SYSTEM

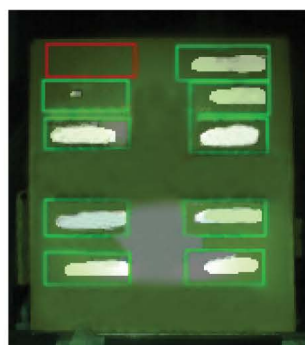
PackChek™ is ClearVision's automated packaging inspection system that takes a thermal and visible image of every package to ensure hot melt glue has been applied in the correct locations. Hot melt sensors have been around for decades, but tight space constraints on packaging machinery makes retrofitting them into existing machines extremely difficult. PackChek™ can be installed at the discharge of your machine, without space constraints.

HOW IT WORKS

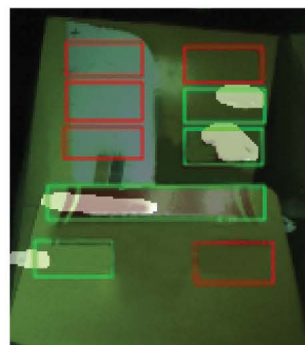
Using the thermal image, PackChek™ finds the heat signature of each glue bead, verifies its position and displays a user friendly image.



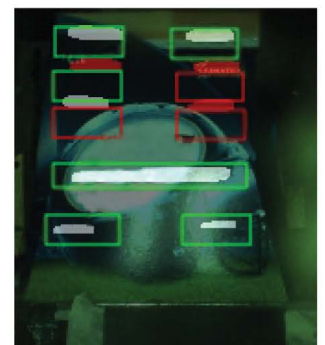
MISSING GLUE BEADS



WEAK GLUE BEADS



CRUSHED, TORN OR OPEN FLAP



MISALIGNED GLUE BEADS

World Headquarters

USA, OH, Cincinnati | Tel: +1.513.874.6550
info@valcomelton.com

America Manufacturing, Sales & Service Centers

Canada, Vancouver, B.C.
ClearVision Technologies
Tel: +1.604.998.4012
canada@valcomelton.com

USA West Coast, CA, Petaluma
GMS-Vansco
Tel: +1.707.285.3392
inquiry@gmsvansco.com

Mexico, México D.F.
Tel: +52.55.6278.1727
mexico@valcomelton.com

Colombia, Bogotá
Tel: +57.313.421.0926
colombia@valcomelton.com

Brazil, Sao Paulo
Tel: +55.11.3071.2117
brazil@valcomelton.com

Europe Manufacturing, Sales & Service Centers

Spain, Navarra, Orcoyen | Tel: +34 948 321 580
spain@valcomelton.com

France, Valence | Tel: +33 (0) 4 75 78 13 73
france@valcomelton.com

Italy, Brescia | Tel: +39 030 2732544
italy@valcomelton.com

Italy, Brescia | ERO s.l.r | Tel: +39 030 2731503
info@ero-gluers.com

Benelux, The Netherlands | Tel: +31 252-673673
benelux@valcomelton.com

Hungary, Budapest | Tel: +36 1-214-4705
hungary@valcomelton.com

UK, England, Telford | Tel: +44 1952-677911
uk@valcomelton.com

Germany, Düsseldorf | Tel: +49.211 984 798-0
germany@valcomelton.com

Poland, Dlugoleka | Tel: +48 71 889 04 50
poland@valcomelton.com



South, Southeast, West & Central Asia Manufacturing, Sales & Service Centers

Turkey, Istanbul | Tel: +90 212 327 99 71
turkey@valcomelton.com

India, Bangalore | Tel: +91.80.46553300
india@valcomelton.com

UAE, Sharjah | Tel: +971.521305960
uae@valcomelton.com

Singapore, Singapore | Tel: +65 850 95355
singapore@valcomelton.com

East Asia Sales & Service Centers

China, Shanghai | china@valcomelton.com
China, Xiamen | Tel: +86.592.591.7854
Fax: +86.592.591.7834 | china@valcomelton.com

To find the office nearest you, visit:
<http://bit.ly/2Cb8Fv2>
or snap a picture of this QR Code

