



INSPEKT

QUALITY INSPECTION & PROCESS MANAGEMENT SOLUTIONS

FOR THE COATING & CONVERTING INDUSTRIES

WEIGHT INSPEKT GRAMMAGE CONTROL SYSTEMS

Weight Inspekt is an infrared grammage control system that measures the adhesive coat weight inline, independently from the substrate thickness, providing precise and valuable insight about the gluing process.



INLINE MEASUREMENT

There is no need to stop/restart the line for sample measurement, avoiding associated downtime and product loss until the production is fully stable.



FULL PROCESS REPORTING

Gain an overview of the complete process by storing an adhesive distribution map together with the working parameters defined on the recipe for each roll produced (line speed, application width, grammage, coating die position, tensions, pressures, temperature, etc.). The system's reports provide accurate data and insight to help internal teams optimize their processes.

CONNECT INSPEKT MODULE



The Connect Inspekt module promotes an **efficient communication exchange** between different systems and areas in the company. This tool ensures up-to-date data is available in real time through a web browser interface without additional software.

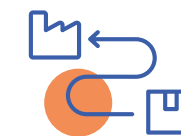
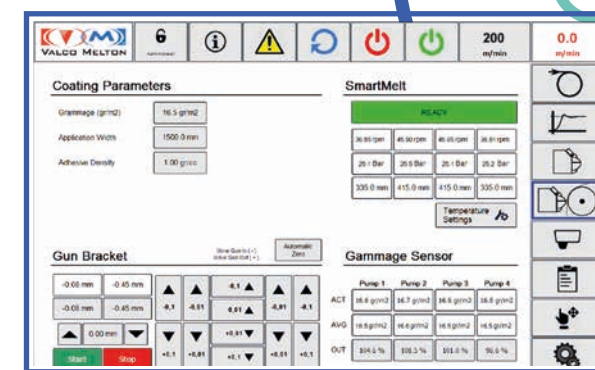
All details about the defects detected by **Coat Inspekt** and **Weight Inspekt** systems and their exact position in the roll are transferred to the slitting station, providing essential information for the effective **planning and execution of recovery or rework** operations.



WEIGHT INSPEKT & AKURA SERIES

Control the **average grammage** of each hydraulic zone on the Akura applicator in a **close loop** with the gear pumps. As deviations are detected, the system automatically adjusts the adhesive flow for the specific hydraulic zone.

CLOSE-LOOP



INSPEKT TRACK MODULE

MISTAKE PROOFING - ERROR DETECTION

When operators scan the barcodes of raw materials and coating line components, such as shims or coating nozzles, the system will generate an alert if the scanned codes do not correspond to those specified in the production order, prompting the operator to take corrective action.

PRODUCT TRACEABILITY

Detailed information about the product batches can be printed and transferred to the following step of the process: from raw materials and working parameters such as temperature, pressure, speed, and consumables to the finished roll adhesive distribution map from **Weight Inspekt** and the defect roll map from **Coat Inspekt**. This provides companies with complete **traceability** and a better understanding of production events.



COAT INSPEKT

VISION INSPECTION WITH AI

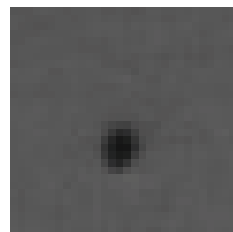
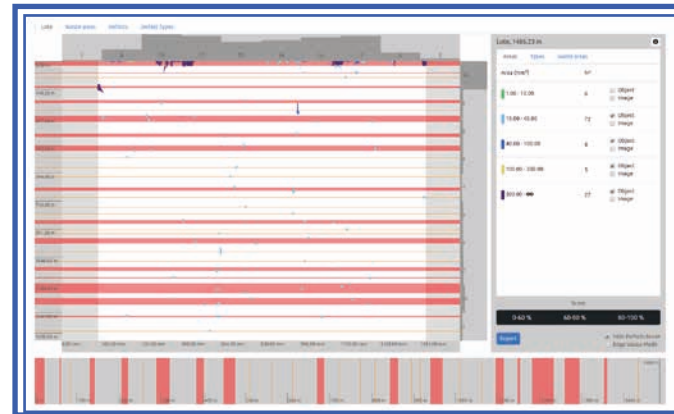
Real-time vision inspection for coating processes that facilitates an immediate and intuitive overview of the production status. Together with the historical data stored, it provides companies with a powerful tool for process analysis.

GUARANTEE DEFECT-FREE PRODUCTS

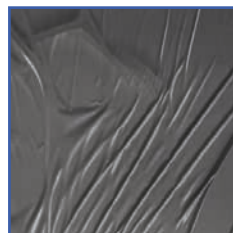
Detect any defect on the roll, with the ability to eliminate it in the following process step (slitting station).

MINIMIZE WASTE

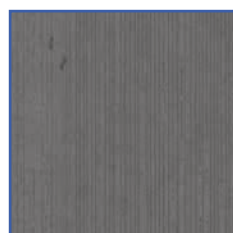
Real-time error detection allows operators to take immediate corrective action, reducing waste and production costs.



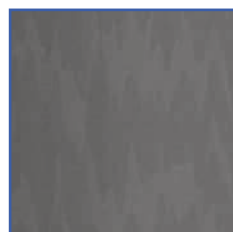
SPOTS



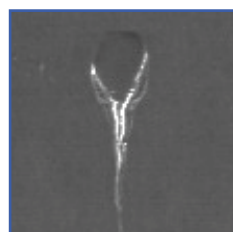
WRINKLES



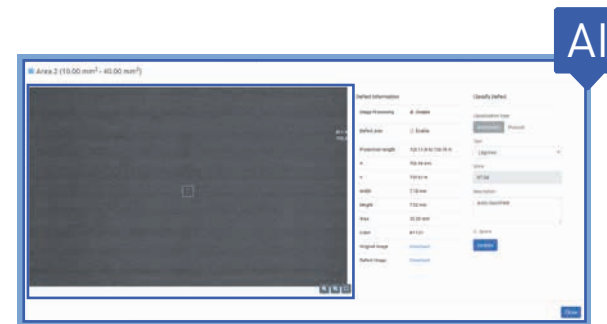
SCRATCHES



MISSING GLUE



EXCESS OF GLUE

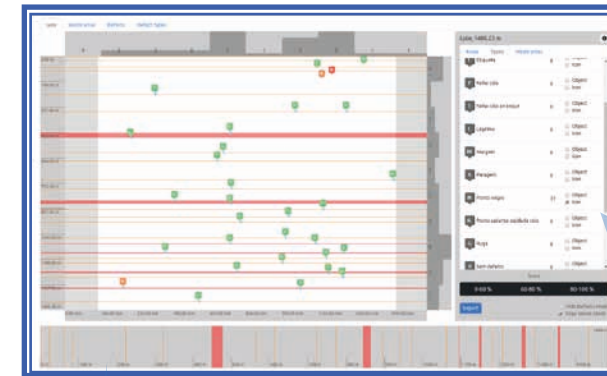


DEFECT CATEGORIZATION BY AI

All errors detected are automatically categorized into five pre-set categories.

Data may be filtered by:

- Defect category
- Defect size
- Waste area

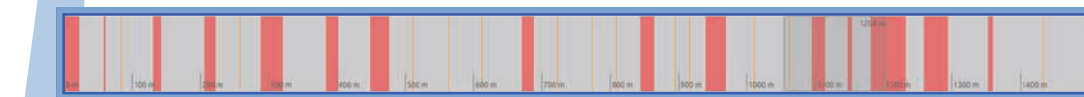


DATA-BASED CONTINUAL IMPROVEMENT

Store images and production reports for subsequent analysis and complete product traceability. Help teams make informed decisions to enhance product quality and process efficiency with a crucial tool that supports continual improvement strategy.



Present historical data in an intuitive and illustrative manner. Defects can be easily searched and filtered by size, category, or waste area. Additionally, high-definition pictures of each defect can be directly accessed from the screen, facilitating a comprehensive understanding of the coating process.



ROLL DEFECT MAP

View all defects logged in the system and view on a user-friendly roll defect map, which allows users to zoom in on specific waste areas to see actual images of each defect.

These waste areas are marked for removal in the following station using the **Inspekt Connect Module**.

INSPEKT ASSIST

SUPPORT PROGRAMS & TRAINING



REMOTE SUPPORT PROGRAMS

- Webcam for remote diagnosis
- Remote access to identify out-of-tolerance working parameters and determine root causes
- Remote backups. Remote rebuild in the event of system failure
- Dedicated phone support



EMPLOYEE TRAININGS

We offer comprehensive employee training during **system implementation** to ensure that users thoroughly understand the system's capabilities. Additionally, ongoing training is provided for each **system update/upgrade** to keep users up-to-date with the latest functionalities.

PROD INSPEKT

MANUFACTURING EXECUTION SYSTEM

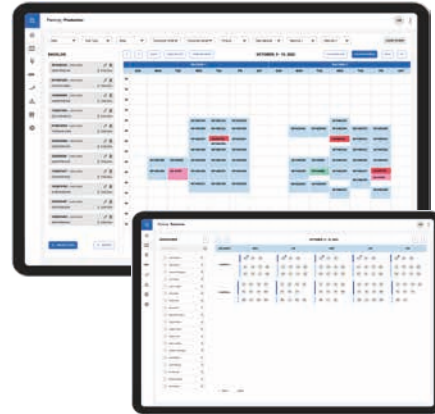
Uncover your production's hidden growth potential with Prod Inspekt MES. It features nine modules that integrate all production-related data into a single platform, helping align all company areas through accurate data for informed decision-making.

PLANNING



You can automatically or manually organize your production centers, considering variables such as production type, work, or production output to allocate resources efficiently.

Additionally, the system allows users to organize production orders for testing, maintenance, and research, generating detailed planning maps of the work centers, human resources/workforce, and internal logistics.



QUALITY



The quality module compiles all the data collected in the different steps of the process, including data from the automatic systems, **Coat Inspekt** and **Weight Inspekt**. This data allows the user to recover defective materials by identifying good rolls, rolls with splicing, and non-standard length rolls.



MACHINE DATA COLLECTION



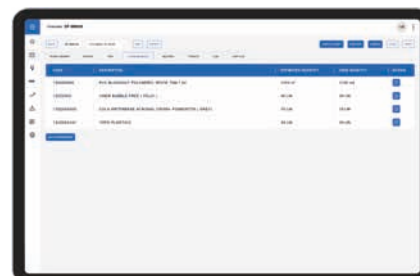
Automate machine data collection, such as working temperature, pressure, speed, or downtime, enables companies. Generate automatic alerts, create production events, or categorize downtime. These factors provide a deep understanding of the production process. Automation in data collection ensures accuracy, efficiency, and consistency.



CONSUMABLES MANAGEMENT

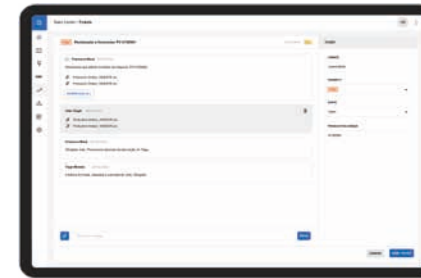


This module provides total product traceability, from raw materials to consumables. It allows users to analyse estimated or programmed consumption versus actual consumption, identifying deviations and allowing for an **accurate cost calculation**. It promotes the importance of precision in the use of consumables, directly contributing to cost reduction and efficiency improvement.



COMPLAINTS MANAGEMENT

Manage **internal and external complaints** from one platform, associating tickets to work orders to better understand issues and processes. This tool promotes effective communication at all production levels for quick problem resolution and increased internal/external customer satisfaction.



MAINTENANCE

Integrate maintenance and production planning to manage maintenance actions from creating instructions, alerts, and tasks to calculating spare parts and stock.

This module promotes proactive maintenance practices, reducing unplanned downtime and extending equipment lifespan.



LABELING

Labeling provides **unique product identification**, from raw materials to final product. This ability to accurately track each product is essential for quality management and to facilitate a quick response to internal/external claims.



ENERGY

The energy module focuses on efficient management and optimization of energy consumption. Assessing **consumption by energy source**, work center, or department helps reduce the environmental footprint and operational costs.



KPI

The KPI module allows for the assessment of process stability, which helps identify areas for improvement.

Utilizing metrics such as OEE, product yields, SLAs, product cost, and production time generates valuable insight for top-level decision-making.

The information provided promotes the company's continual improvement actions, supporting overall process optimization.

