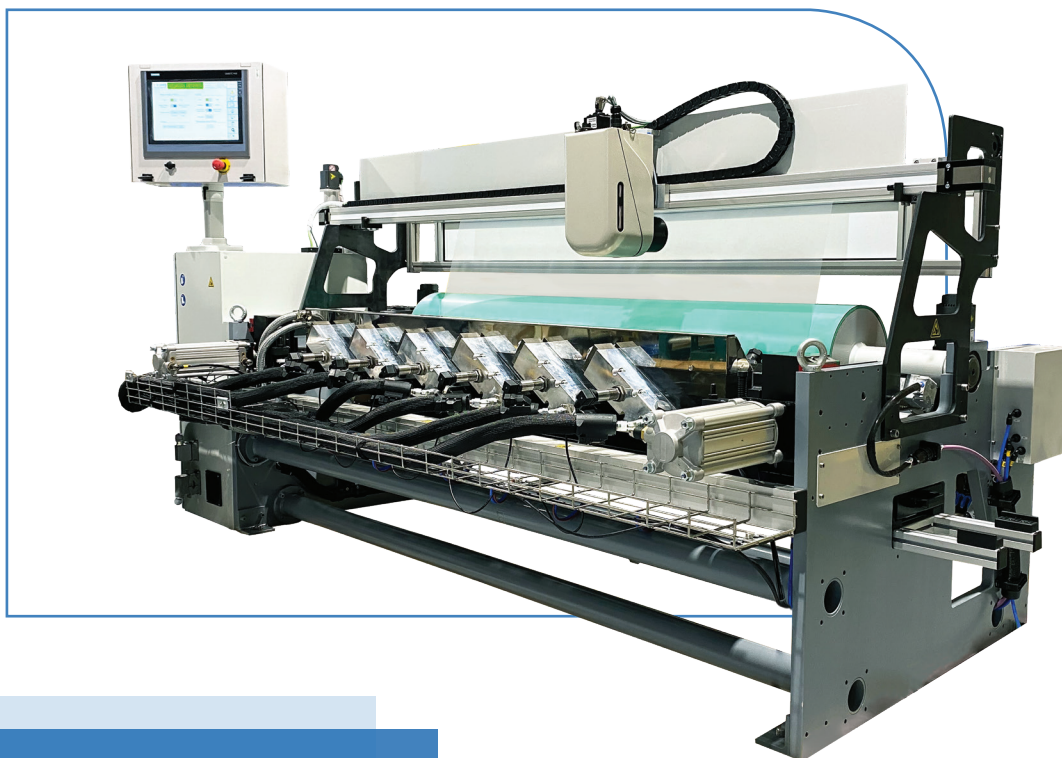


AKURA COATING STATIONS

The Complete Hot Melt Coating & Quality Assurance Solution

Incorporate hot melt coating capabilities to your production process with Valco Melton's Akura Coating Stations. Achieve homogeneous and streak-free coatings on continuous applications up to 3000mm wide.

- **Install anywhere.** Constructed to be either a permanent fixture on existing machines or fully mobile wheel-in carts
- **Expand your product portfolio and increase productivity.** Incorporating Akura Coating Stations to your current water-based or solvent-based coating line allows you to increase the range of products to include those where hot melt or UV hot melts are better suited, or higher line-speeds are required.
- **Upgrade your gravura bath application.** Enjoy the benefits of an enclosed gluing system, such as improved thermal stability and minimized adhesive pollution.
- **Incorporate linerless** capabilities to your siliconizing machine.



ELECTRONICS

All electronics are commercially available components.

Main machine communication protocols **Profinet** and **Ethernet IP**.

MOUNT ASSEMBLY

ROLL OPTIONS

Back Up Roll. 95 shore EPDM roll, refrigerated and motorized. Motor control based on line speed or tension control.

Optional Rolls:

- Path rolls
- Banana rolls to prevent creases on the substrate
- Path roll with load cells when working in tension control mode

Precision brackets for consistent and accurate positioning of the coating head against the back up roll. Off-roll mount assemblies available in option.

Pneumatic in/out movement to minimize product damage during machine stops.

X, Y, Z axis adjustments. Manual, using a clock, or automatic, using a stepper motor.



APPLICATORS

Akura PF & PFL applicators feature a number of independent hydraulic zones. Each zone is fed by a gear pump, to ensure an even distribution of the adhesive across the full web width.

Quick-change nozzle mechanism: from rotating bar to continuous and off-roll. Intermittent nozzles available for Akura PF only.

QUALITY CONTROL

Product traceability. Store the adhesive distribution and defects map of each roll produced.

Weight-Inspekt Grammage Control

Measure the adhesive coat weight in-line, independently from the substrate thickness, gaining precise information about the gluing process.

The average grammage of each hydraulic zone on the Akura applicator may be controlled in close-loop with the gear pumps.

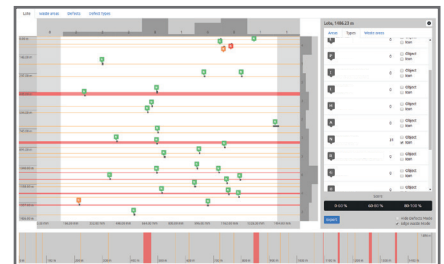
Coat-Inspekt Vision Inspection

Real-time vision inspection combined with an Artificial Intelligence system that automatically classifies all errors detected into pre-set categories.

Waste areas are indicated for removal on the following station, commonly slitting.



Weight-Inspekt Grammage Control



Coat-Inspekt Vision Inspection

Technical Specifications

Akura Coating Stations	
Max. Application Width	Up to 1300 mm
Max. Line Speed	Up to 500 m/min
Grammage / Tolerances (*)	10-200 gsm (+/- 5%)
Adhesives	PSA, UV-PSA, EVA, Wax, Parafins
Substrates	Paper, PE, PET, PP, BOPP, foams, nonwovens. Other substrates according to project requirements

*Coating thickness will vary depending on the nozzle and adhesive type

For more information, visit valcomelton.com or contact your local representative

World Headquarters: Cincinnati, OH, USA • Tel: +1 513 874 6550

Europe Headquarters: Orkoien, Spain • Tel: +34 948 321 580



Locations

inquiry@valcomelton.com

KCB 000262 EN 002