

WEIGHT-INSPEKT

Infrared Grammage Control Systems

Weight-Inspekt measures the adhesive coat weight, independently from the substrate thickness, providing precise information about the gluing process.



- Simple programming. Indicate desired grammage & tolerance values for each recipe
- Store up to 15 recipes. No need to readjust for every substrate change, simply load the recipe
- Works on any transparent and/or single colour substrates, regardless of material thickness or smoothness of the surface
- Adjust the application tolerances faster by measuring the grammage in different areas of the application width

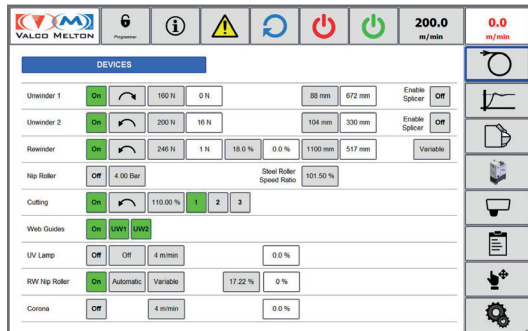
- **Inline measurements minimize product waste.** The coating line requires some time until production is completely stable after a machine stop to cut and measure individual samples. This results in important product loss. Our inline measurement system controls the product grammage without stopping the line, preventing product waste.
- **Product traceability.** Access detailed information about each of the production batches, including working parameters such as speed, tension, adhesive type, or temperatures, and the adhesive distribution map throughout the complete roll.
- **Support your continual improvement processes.** The reports generated by the system provide data and insight that your internal teams can use to optimize the coating process.

Automatic Applicator Adjustments

The average grammage of each hydraulic zone on the Akura applicator may be controlled in close-loop with the gear pumps. As deviations on the adhesive are detected, the system will automatically adjust the adhesive flow for the specific hydraulic zone.



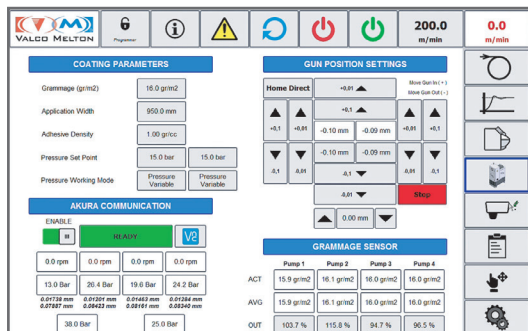
FULL PROCESS REPORTING



When working with our LP Series Coating Lines, or Akura Coating Stations, the system records the working parameters defined on the recipe for each roll produced. This information is stored along with the adhesive distribution map.

Parameters stored include:

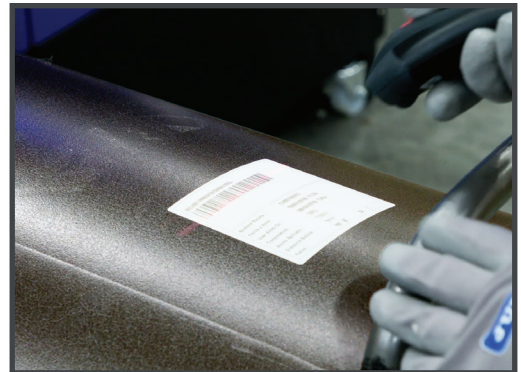
- Line speed
- Application width
- Grammage
- Coating die position
- Tension: working and tension torque in the unwinders and rewinders
- Pressure: coating die against back up roll, laminating and rewriter nip roll
- Temperature: adhesive and back up roll
- UV and corona dosing (if applicable)



PRODUCT TRACEABILITY

Incorporating a barcode scanner provides detailed information about the substrates, adhesives, lips and shims used in the production of each roll.

This information is printed onto a label that is attached to the roll, transferring this information to the following steps of the process.



FULL PROCESS REPORTING

Prevent human error. Our LP Series Coating Lines and Akura Coating Stations store recipes for each of the roll types produced. Operators can scan the barcodes on the substrates, adhesives, lips, and shims during set up. In the event that any of these items don't fit the selected recipe, the system will alert the operator.

For more information, visit valcomelton.com or contact your local representative
 World Headquarters: Cincinnati, OH, USA • Tel: +1 513 874 6550
 Europe Headquarters: Orkoien, Spain • Tel: +34 948 321 580



Locations

inquiry@valcomelton.com

KCB 000263 EN 002