

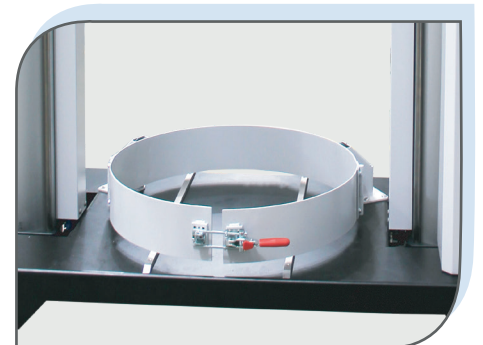
SMARTDRUM SERIES

200L Drum Unloaders with the highest Melting Capacity

SmartDrum Series Unloaders have been designed to achieve the highest melting rates in the industry when working with any type of adhesive delivered in 200-liter drums, even with acrylic adhesives.

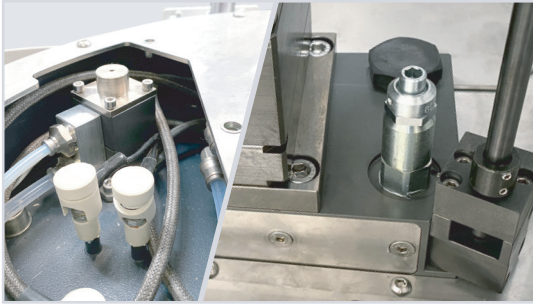


The highest melting rates. A specially designed high-capacity finned platen achieves the highest melting rates known to the industry, even when working with acrylic adhesives. All platens are Teflon® coated and include cast-in heaters.



Faster drum changes. A new drum fastening system facilitates drum changes, ensuring the new drum will always be accurately placed in the correct working position. Optional drum clamp allows working with adhesives delivered in fiber drums.

- Main machine communication protocols Modbus TCP and Ethernet. Profinet, Profibus and Ethernet IP protocols available as an option.
- SmartDrum Unloaders allow users to connect to the control panel screen through a VNC server.
- All electronics are commercially available components. No proprietary elements..
- Optional Safety Features include a vent hood for easy connection with ventilation tube, as well as a platen protection system to shield operators from entrapments.
- Up to 6 high-power hose/gun connections (10A). Additionally, SmartDrum unloaders feature our SmartNet connection, allowing to connect up to 3 Smartdrive boxes to control 3 pumping stations, 2 SmartFlow boxes and 2 SmartHeat boxes for up to 6 additional hose/gun connections each or up to 12 additional coating head heating zones.
- Tandem Mode. Working in tandem eliminates downtime associated with drum changes. SmartDrum Series can work in tandem by simply connecting the two unloaders with an Ethernet cable. No additional equipment or accessories needed.



Automatic blow-off valve included

A built-in pressure relief valve adjusts the adhesive output pressure. A pneumatic pressure relief valve is available as an option.

Intuitive touchscreen panel

Working parameters, as well as adhesive consumption data (grams per square meter or grams per product) can easily be checked and configured from the screen.



Technical Specifications

| SmartDrum Series | |
|------------------------|--|
| System | 200L high-capacity, finned platen |
| Drum Capacity | 200L |
| Max. Melting Capacity | 240 kg/h (*) |
| Max. Pumping Rate | 240 kg/h |
| Working Temperature | 30 - 230°C |
| Max. Working Viscosity | 90,000 cps |
| Max. Working Pressure | 80 Bar |
| Electrical Consumption | 23 Kw |
| Dimensions | Platen up: 1655mm W x 716mm D x 2402mm H Platen down: 1655mm W x 716mm D x 1446mm H |

(*) Melt rate may vary depending on specific adhesive type and working conditions

| | | |
|---------------------------|--------------|--------------|
| Max. Channel Power | Ni120 | PT100 |
| Hose / Gun | 2300W | 2300W |

For more information, visit valcomelton.com or contact your local representative
 World Headquarters: Cincinnati, OH, USA • Tel: +1 513 874 6550
 Europe Headquarters: Orkoien, Spain • Tel: +34 948 321 580



Locations

inquiry@valcomelton.com

KCB 0000219 EN 003