

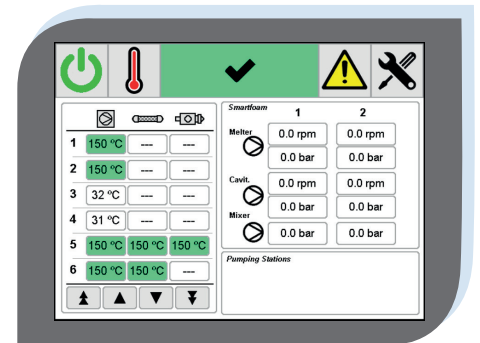
SMARTFOAM 120

Simplify your processes by combining adhesive melting and foaming in one unit. SmartFoam 120 units create adhesive foam by using a dynamic mixer to combine different types of adhesives with dry air. This process reduces adhesive density by up to 50% while maintaining its bonding capabilities. Immediate benefits include important adhesive savings and more eco-conscious operations.

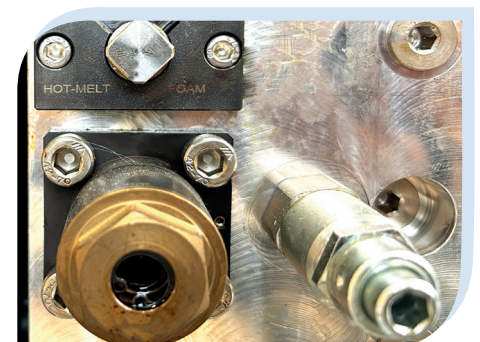


Adhesive Foaming Benefits:

- **Production Savings.** Adhesive density, and therefore adhesive usage, may be reduced by up to 50%.
- **Improve adhesive properties** such as open time, compression, wetting on impermeable substrates, and penetration on porous substrates. The increased contact surface area results in superior bonding strength between substrates, even without immediate compression after application.
- **Optimize adhesive usage.** Adhesive foam expands when applied, making it an optimal solution for filling gaps with less adhesive. Additionally, this results in lighter final products compared to traditional adhesive application for gap or joint filling.



Easily adjust adhesive density to each application's required value, ranging from 0 to 50%. An intuitive PLC simplifies programming tasks.



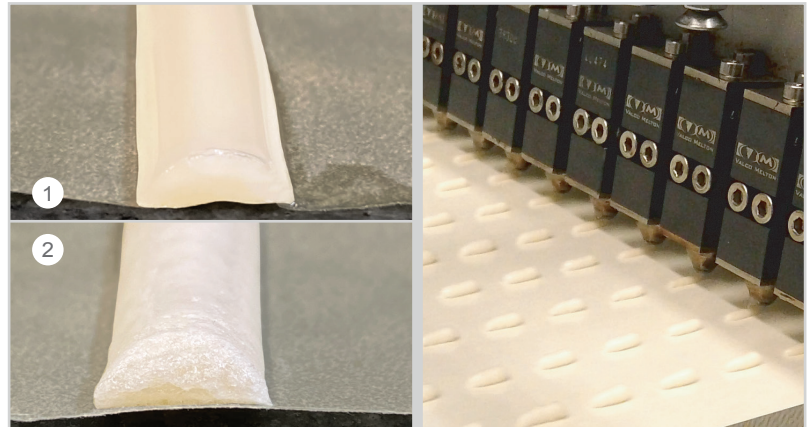
Adapt to multiple processes. SmartFoam units feature 2 adhesive outputs that can be configured to feed 2 foam applications, 2 standard hot melt applications, or a combination of 1 foam and 1 standard application. Designed for quick and simple changes between standard and foam dispensing.

Is adhesive foaming an alternative for my production process?

Some of the more relevant adhesive foam properties include its *reduced density* and *lighter weight*, its *stronger bond* on uneven surfaces and its *bleed-through reduction* on thin, porous substrates.

These properties make adhesive foaming an excellent alternative for a variety of industries ranging from sealing and gasketing in household appliances, automotive or filters, to sealing and protection of electronic components.

SmartFoam brings in proven performance with a variety of hot melts, including EVA's, PSA's, Polyester or Polyolefins.



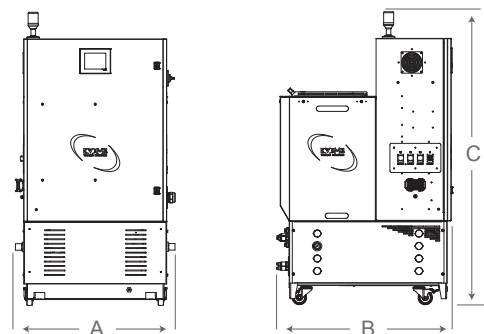
Adhesive expands with the foaming process. Its contact surface is increased (Fig. 1 & 2), while its density is reduced.

Technical Specifications

SmartFoam	
Tank Capacity	120L
Melting Capacity	95 kg/h
Max. Pumping Capacity per Pump	90 kg/h
Number of Pumps	2
Working Temperature	Up to 230°C
Electrical Connection	230 III + T, 400 III + N + T
Max. Electrical Consumption	2300W
Electrical Consumption (pump & Mnifold)	3650W
Adhesive Mixing Capacity	5 to 100L/h (2,50 to 50kg/h)
Density reeduction	Up to 50%
Working Air Pressure	6 bar

Max. channel power	Ni120	PT100
Hose / Gun	2300W	2300W

Dimensions (mm)	SmartFoam 120
A	893
B	981
C	1642



For more information, visit valcomelton.com or contact your local representative
 World Headquarters: Cincinnati, OH, USA • Tel: +1 513 874 6550
 Europe Headquarters: Orkoien, Spain • Tel: +34 948 321 580

