



# CLEARVISION THE PERFECT CARTON™

## QUALITY VISIBLE



### World Headquarters

USA, OH, Cincinnati | Tel: +1.513.874.6550  
info@valcomelton.com

### America Manufacturing, Sales & Service Centers

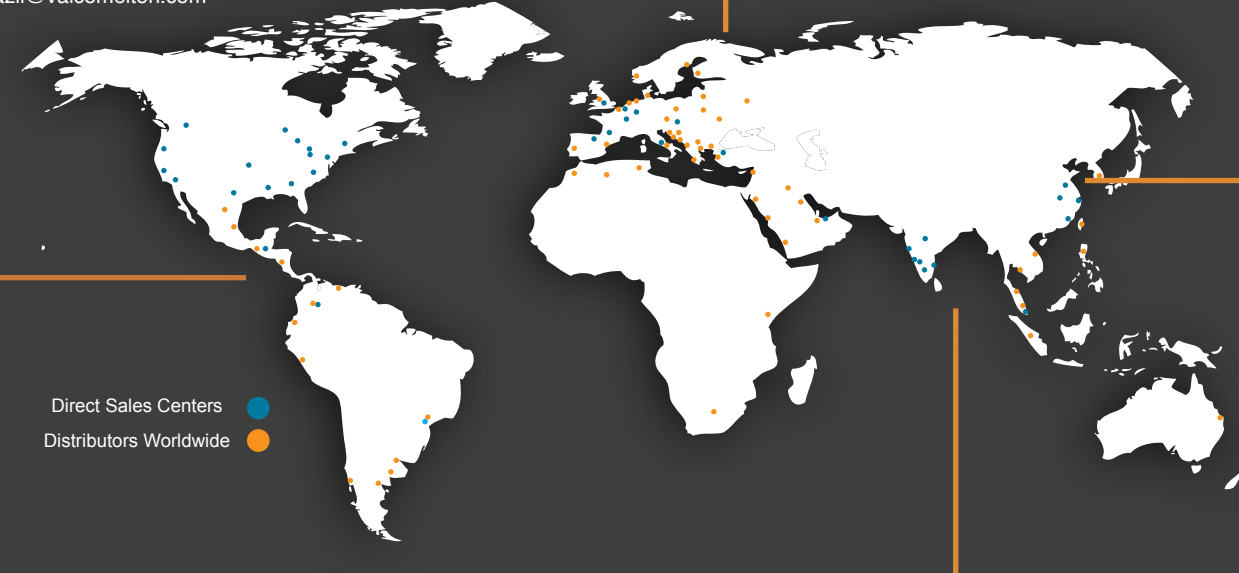
Canada, Vancouver, B.C.  
ClearVision Technologies  
Tel: +1.604.998.4012  
canada@valcomelton.com

USA West Coast, CA, Petaluma  
GMS-Vansco  
Tel: +1.707.285.3392  
inquiry@gmsvansco.com

Mexico, México D.F.  
Tel: +52.55.6278.1727  
mexico@valcomelton.com

Colombia, Bogotá  
Tel: +57.313.421.0926  
colombia@valcomelton.com

Brazil, Sao Paulo  
Tel: +55.11.99919.3510  
brazil@valcomelton.com



Direct Sales Centers ●  
Distributors Worldwide ●

### South, Southeast, West & Central Asia Manufacturing, Sales & Service Centers

Turkey, Istanbul | Tel: +90 212 327 99 71  
turkey@valcomelton.com

India, Bangalore | Tel: +91.80.28378111  
india@valcomelton.com

UAE, Sharjah | Tel: +971.521305960  
uae@valcomelton.com

Singapore, Singapore | Tel: +65 850 95355  
singapore@valcomelton.com

### Europe Manufacturing, Sales & Service Centers

Spain, Navarra, Orcoyen | Tel: +34 948 321 580  
spain@valcomelton.com

France, Valence | Tel: +33 (0) 4 75 78 13 73  
france@valcomelton.com

Italy, Brescia | Tel: +39 030 2732544  
italy@valcomelton.com

Italy, Brescia | ERO s.l.r | Tel: +39 030 2731503  
info@ero-gluers.com

Benelux, The Netherlands | Tel: +31 252-673673  
benelux@valcomelton.com

Hungary, Budapest | Tel: +36 1-214-4705  
hungary@valcomelton.com

UK, England, Telford | Tel: +44 1952-677911  
uk@valcomelton.com

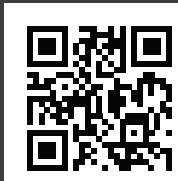
Germany, Düsseldorf | Tel: +49.211 984 798-0  
germany@valcomelton.com

Poland, Siechnice | Tel: +48 71 889 04 50  
poland@valcomelton.com

### East Asia Sales & Service Centers

China, Shanghai | china@valcomelton.com  
China, Xiamen | Tel: +86.592.591.7854  
Fax: +86.592.591.7834 | china@valcomelton.com

To find the office nearest you, visit:  
<http://bit.ly/2Cb8Fv2>  
or snap a picture of this QR Code



BC-004

# CLEARVISION THE PERFECT CARTON™



## MAKING



# CLEARVISION

THE PERFECT CARTON™

## PATTERN CONTROLS



VCX Controller



MCP-4J Controller



MCP-8 Controller

### Glue Control

Setup and adjust all gluing-related attributes from the CartonChek control interface. Also use existing MCP and VCX platforms and link those directly into CartonChek.

## VALCO MELTON'S ECOSTITCH SOLUTION

The new MX EcoStitch solutions from Valco Melton out-performs traditional pneumatic hot melt valves in several ways:

- No shop air required
- Fewer consumable parts
- Reduced downtime
- Glue savings - **Better, precise glue patterns**



Valco Melton's EcoStitch Solution

Traditional Pneumatic System

Valco Melton offers a host of integrated and stand-alone hot melt solutions for your carton production.



D10 Melter

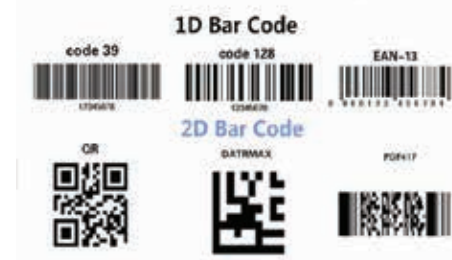
D4 Melter



## CODECHEK

### FEATURES

- Eliminate mixed copy issues
- Validate most 1D (Linear) and 2D (Matrix) barcodes
- Capture and record sequential and random barcodes including GS1 Datamatrix
- Speeds up to 65,000 cartons per hour
- Store variable data of serialized codes in database to ship with your order or future analysis



## GLUECHEK

### FEATURES

- Auto learn function
- Inspect all in-view areas including no glue zones
- Ensure glue is dispensed properly to the carton
- Checks:
  - Glue pattern
  - Glue volume
  - Extraneous glue splash or splatter
- Ensure folds and flaps are positioned correctly

## LASERCHEK

### FEATURES

- Laser line is projected onto carton and used to identify height changes.
- Height changes are inspected in order to recognize folds, flaps, and cut outs.
- Use LaserChek to check perforations, cut outs, tip-on (placement), die cuts or any point that requires a measurement or validation in-line.
- Real time reassurance that 4, 6, 12, and 24 pack carrier handles are punched or knocked out every time.
- Inspect fold presence and quality including double folds.



## BRAILLECHEK

### FEATURES

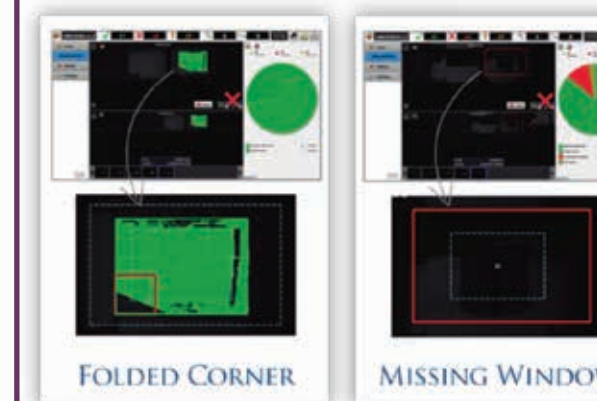
- Decodes braille into text for accuracy and validation
- Identifies missing or misshapen braille dots
- Camera reads printed side of carton to inspect the side of the braille that is read
- Identifies braille dots that are insufficiently formed
- Up to 6 lines of braille on a carton panel
- Speeds up to 65,000 cartons per hour



## WINDOWCHEK

### FEATURES

- Complete window inspection: height, width, position, contaminates, glue pattern & cello with slit are all measured or compared to Master Image
- Set and adjust multiple tolerances to detect various types of defects
- Eliminate potential hazards caused by improper packaging
- Increase customer satisfaction by consistently producing perfect windowed cartons
- Speeds up to 65,000 cartons per hour



## CAMERAS FOR EVERY JOB



NARROW GLUECHEK

### FEATURES

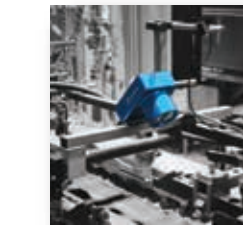
- Small footprint
- Simple to move and install
- Self calibrating
- Ideal for single glue line or DOT applications



MICRO CODECHEK

### FEATURES

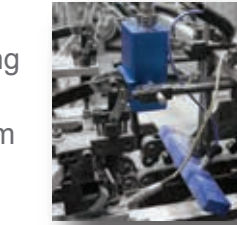
- Compact
- Built-in lighting
- Simple to move and install
- Ideal for barcode inspection



AREACHEK

### FEATURES

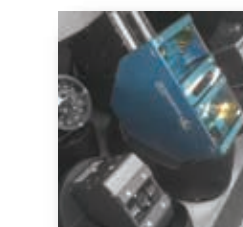
- Typically uses external lighting
- Best for permanent mount
- FOV: 40mm (1.57") to 100mm (3.94")
- Ideal for LaserChek



MEGA GLUECHEK

### FEATURES

- Ideal for whole carton image
- Glue pattern, flaps, and fold confirmation
- Typically uses external lighting
- Best for permanent mount
- FOV: 60mm (2.36") to 700mm (27.56")



SHADOWCHEK

### FEATURES

- Built-in lighting source
- Designed to create profile or shadow to define raised edges.
- Ideal for braille, glue patterns, tip-ons and more

## SENSORS FOR EVERY JOB

### AS-303 – Hot Melt and Cold Glue Single-Bead Detection

- Missing glue
- Incorrect placement
- Glue volume
- Glue dots in unglued areas
- No glue additives
- Scanner and sensor lockout for windows



### CDS Color Code Reader

- Available as bottom-up reflex or pre-folder versions
- Mixed copy detection
- Print-to-print registration and print-to-cut registration detection
- Inspects R\*G\*B color density
- Inspection at speeds above 700 meters/min possible
- Live screen feedback

