



POUCHCHEK

How it Works

PouchChek is a fully integrated inspection system for heat-sealed packaging. This patented* technology captures thermal and visible images simultaneously, overlaying them on a 22" monitor to identify seal integrity issues invisible to the naked eye. The system scans each package at full production speeds, comparing thermal patterns against programmed quality parameters.

When defects are detected, products can be automatically marked or ejected, with images stored for quality and process documentation. The non-destructive inspection process integrates easily with existing production lines and can be customized to your specific packaging requirements.

Benefits

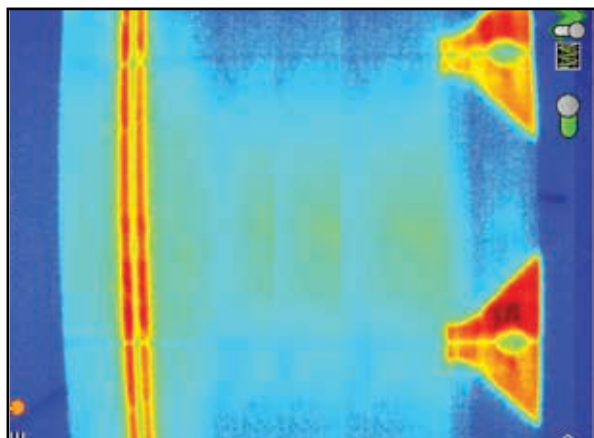
- **Reduce downtime** with real-time heat seal imaging that improves operator setup and **quality confidence** in the process settings delivering confidence in product quality
- Comprehensive **defect management**: customizable alerts, automatic rejection, logging, and job storage
- **Prevent costly returns** and downtime while helping to troubleshoot processes

Features

- Verifies proper heat application across all critical sealing areas
- Detects quality issues including misalignment, improper heat zones, and debris contamination
- Expandable with additional cameras for comprehensive package inspection



PouchChek View



Thermal View



Excessive Heat



Zipper Crunch Missing



Debris in Zipper

*Patent valid in Belgium, Czech Republic, France, Germany, Great Britain, Italy, Netherlands, Norway, Poland, Spain, Sweden, United States



For more information, visit valcomelton.com or contact your local Valco Melton representative.

World Headquarters: Cincinnati, OH, USA (Corporate Offices) • Tel: +1.513.874.6550 • info@valcomelton.com

Europe Headquarters: Orkoien, Spain • Tel: +34.948.321.580

Asia Headquarters: Xiamen, Fujian, China • Tel: +86.592.591.7854