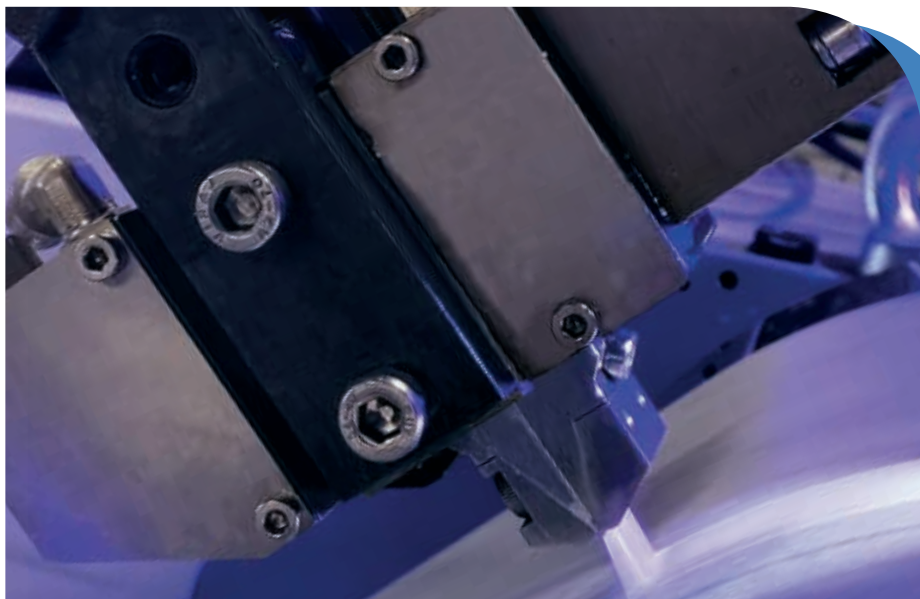


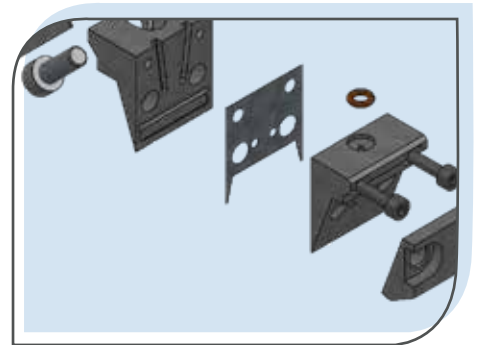
KAPPA NOZZLE

Web coating nozzles

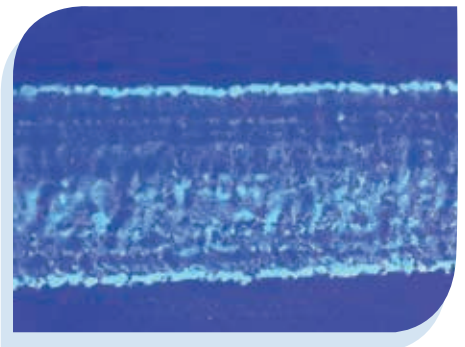
Valco Melton's Kappa Nozzles deliver a wide range of non-contact adhesive patterns, from high dense to very soft random fibers open patterns. They are also the best option when looking for high precision on the adhesive pattern definition. Kappa Nozzles have the best edge, leading and trailing control as well as an excellent cutoff.



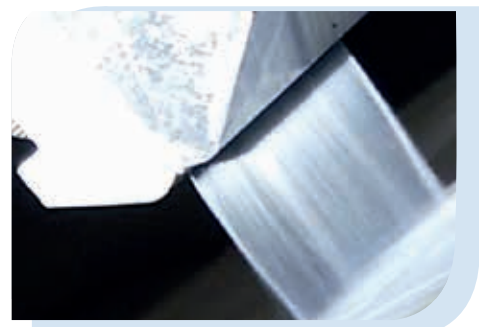
- Designed to Support both Continuous and High-Speed Intermittent Applications due to its superior cutoff capabilities.
- Produces Random Patterns formed by broken adhesive fibers and also High Dense uniform adhesive coated areas even on porous or irregular surfaces.
- Great bonding strength repeatability.
- Stainless Steel made, Shim-based designed.



Available in 25mm full width as well as in partial coverage configurations.

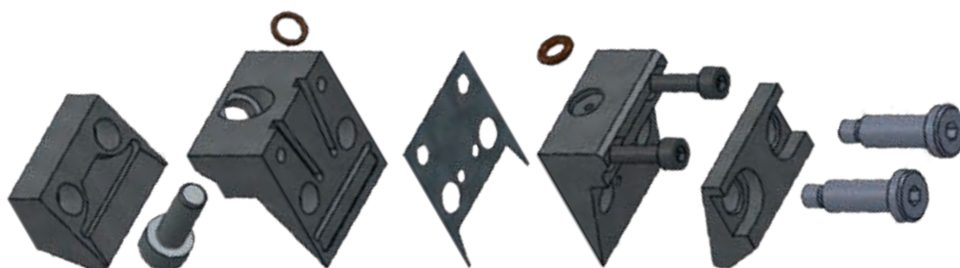


Provides a unique precision on the pattern positioning both in cross-web and machine direction.

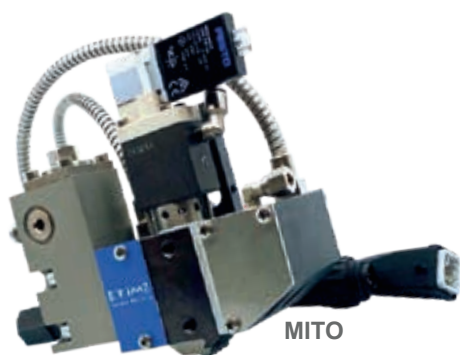


Adhesive is delivered through a central shim which provides the best protection against adhesive strikes-through when used to bond very thin substrates.

Stainless Steel Shim-based Design



Applicators



Technical Specifications

Kappa Nozzle	
Pattern	Random Broken Fibers
Production Speed	Up to 650 m/min
Typical Add- On	Up to 20 gsm
Max. Hydraulic Pressure	55 Bars
Temperature Range	110°C to 205°C
Adhesive Viscosity	1,000-6,000 cps
Fiber Size	25 to 75 Microns
Application Widths	5mm/10mm/15mm/20mm/25mm (centered or side-justified)
Air Pressure	0.5 to 2 Bar
Distance from substrate	10 to 40mm
Design/Material	Shim-based (1) / Stainless Steel / Viton
Compatibility	Bat25 Modules /vmGenesis/ FlexSpray / Mito

For more information, visit valcomelton.com or contact your local representative

World Headquarters: Cincinnati, OH, USA • Tel: +1 513 874 6550

Europe Headquarters: Orkoien, Spain • Tel: +34 948 321 580



Locations

inquiry@valcomelton.com

KCB 000252 EN 002