



LP SERIES COATING LINES

FOR HOT MELT COATING & LAMINATING



VALCO MELTON

Adhesive Dispensing & Quality Assurance Systems

COATING & LAMINATING LINES

AN OVERVIEW OF OUR LATEST PROJECTS

LP Series Coating Lines are designed to coat and laminate multiple types of materials, in order to create laminated materials delivered in roll format, for a variety of industries and manufacturing processes.

These are of some of the latest coating line configurations we have delivered to the industry, including their individual application specifications, adhesives, substrates, and any accessory hot melt dispensing equipment.



LP350 Label Manufacturing

Materials:

Adhesive: PSA (permanent, removable or ultra-removable)

Face paper:

Semi- or high-gloss, white, coated paper, 80gsm

Metalized printing paper, 83 gsm

Thermal paper, 70 gsm

Liner: Yellow or white siliconized glassine, 60gsm

Our Latest Project Application Specifications

Line speed: 150 m/min

Grammage: 15-90 gsm

Application: Width 350mm

Pattern: Continuous, Stripe, Intermittent

Our complete hot melt dispensing solution includes:

Melter: SmartMelt

Akura PF hot melt applicators with interchangeable nozzles for continuous, intermittent or rotating bar applications

LP600 Tape Manufacturing

Materials:

Adhesive: UV Curable Acrylic PSA

Materials for laminated products:

Face material:

EPDM Rubber 3-6 mm

PE Foam 3-6 mm

Aluminium

Liner:

Glassine Paper 60-80gsm

Materials for self-wound products:

PVC, 30 μ

Reinforced aluminium tape (with mesh), 30-50 micron



Our Latest Project Application Specifications

Line speed 100 m/min

Grammage 40-250 gsm

Application width 600mm

Pattern: Full Coating

Our complete hot melt dispensing solution includes:

SmartDrum Series 200L high capacity drum unloader

SmartMelt Series gear pump unit used as buffer tank

Akura PF hot melt applicators with interchangeable nozzles for continuous, intermittent or rotating bar applications

LP1000

Medical Tape & Plaster Manufacturing

Materials:

Adhesive: PSA

Materials for laminated products:

Face material:

- Polyester Nonwoven, 45gsm
- Polyethylene Foam, 50gsm
- Polyurethane Latex Film, 70gsm
- Polyethylene Film, 65gsm

Liner:

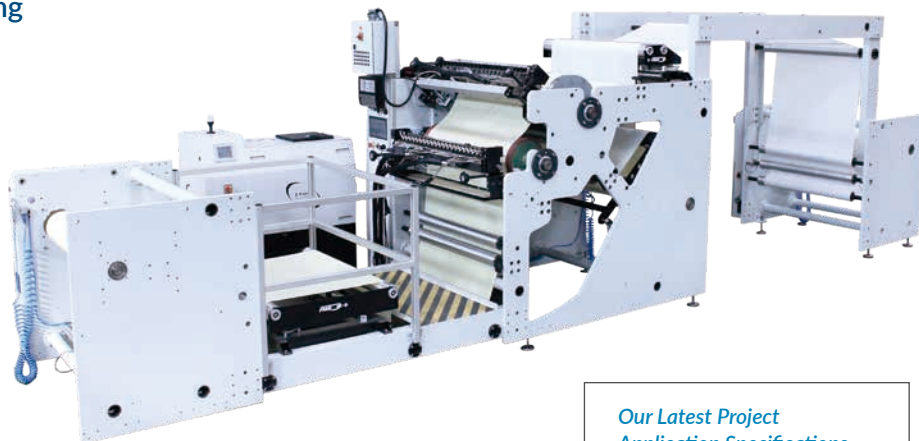
Glassine Paper 60-80gsm

Materials for self-wound products:

- Cotton, 100gsm
- Acetate Rayon, 70gsm
- Viscose Nonwoven Rayon, 35gsm

Our complete hot melt dispensing solution includes:

SmartDrum Series 200L high capacity drum unloader
SmartMelt Series gear pump unit used as buffer tank
Akura PFL hot melt applicators with interchangeable nozzles for continuous, intermittent and rotating bar applications



Our Latest Project Application Specifications

Line speed: 100 m/min
Grammage: 35-85 gsm
Application Width: 1000mm
Pattern: Full Coating

LP1400

Sandpaper Manufacturing

Materials:

Adhesive: PSA, PUR

Coated Material: hook & loop, release paper, polyethylene, foam, nonwoven

Laminating Material: paper backed abrasives, fabric backed abrasives, polyester film abrasives

Our complete hot melt dispensing solution includes:

SmartDrum Series 200L high capacity drum unloader
SmartMelt Series gear pump unit used as buffer tank
4 Double EB Series Remote Pumping Stations
Akura PFL hot melt applicators with 8 independent adhesive inputs for optimal adhesive distribution



Our Latest Project Application Specifications

Line speed: 100 m/min
Grammage: 18-95 gsm
Application Width: 1400mm
Pattern: Full Coating



LP1600

Clear-to-Clear Label Manufacturing

Materials:

Adhesive: PSA

Face material:

- Gloss clear, top coated polypropylene, 50-90 μ
- Gloss clear, top coated polyester, 50-75 μ
- Gloss clear, top coated polyethylene, 85-150 μ

Liner:

- Single and Double Side Siliconised Glassine Paper 60gsm
- Siliconised polyester 30 μ

Our complete hot melt dispensing solution includes:

SmartDrum Series 200L high capacity drum unloader
SmartMelt Series gear pump unit used as buffer tank
ConvertCoat rotating bar head hot melt applicator with single adhesive gallery

Our Latest Project Application Specifications

Line speed: 150 m/min
Grammage: 15-25 gsm
Application: width 1600mm
Pattern: Full Coating

LP SERIES

HOT MELT ADHESIVE COATING LINES

Coating Station

Hot Melt Applicator

LP Series Coating Lines feature one of our Akura Series hot melt applicators.

Back-Up Roll

Chilled and motorized. Diameter and rubber hardness is defined for each project.

Mount Assembly

Our brackets allow for X, Y and angle micro-adjustments, which can be made manually or through a stepper motor.

Unwinder Coated Substrate & Laminating Substrates

Different unwinder options for the coated and laminating substrate unwinders are available to suit multiple project requirements. From brake action based on roll diameter to motorized unwinders working in close loop with a load cell, or turret unwinders with automatic splicing to eliminate machine downtime during roll changes.

Rewinder

Rewinder options include simple, motorized rewinders, or double rewinders with automatic splicing.

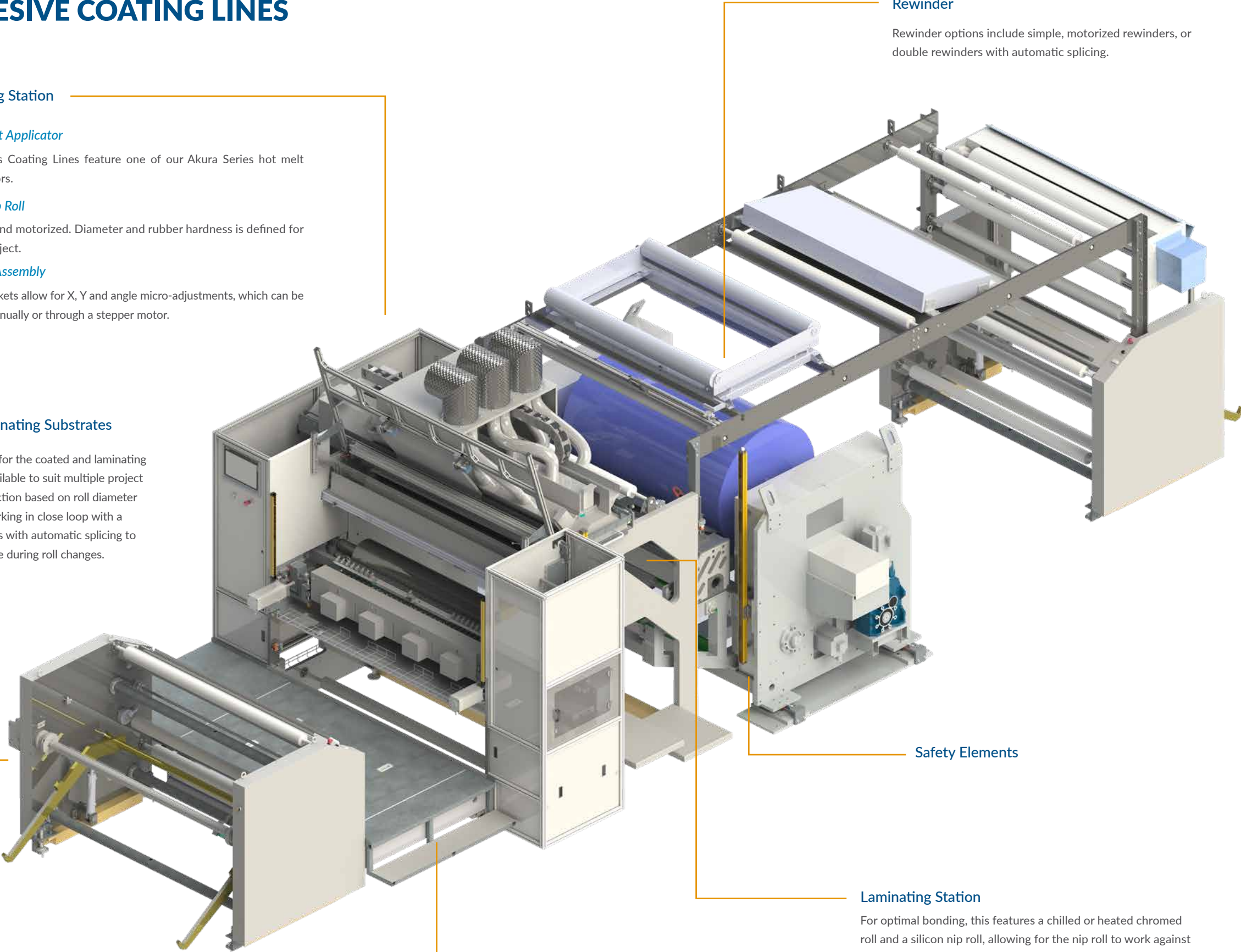
Safety Elements

Laminating Station

For optimal bonding, this features a chilled or heated chromed roll and a silicon nip roll, allowing for the nip roll to work against roll or to leave a gap.

Guiding System

Guiding systems activated by a photocell automatically correct the position of the material to maintain the desired web path.



CUSTOMIZED TO YOUR SPECIFIC PRODUCTION REQUIREMENTS

Every line is designed and configured for each customer's specific production requirements. Therefore, a wide variety of customization options is available, from accessories like UV lamps or corona treaters to automatization and connectivity elements.

GRAMMAGE CONTROL

Infrared grammage measurement systems are an optional feature used to automatically check the application grammage.

When working with ConvertCoat and Endurance applicators, they are used to facilitate the set up of the adhesive distribution.

When the Akura Series equipment features metering systems, the grammage control connects in closed loop with the different dosing areas. Additionally, it generates a final report containing the data from all of the scans.

CONNECTIVITY & TRACEABILITY

Connectivity

We combine telephone support with the use of connectivity for authorized remote access to the machine for maintenance purposes. To facilitate diagnosis and remote troubleshooting, our coating lines incorporate various webcams in the coating and rewinding stations.

Traceability & Parameter Setting

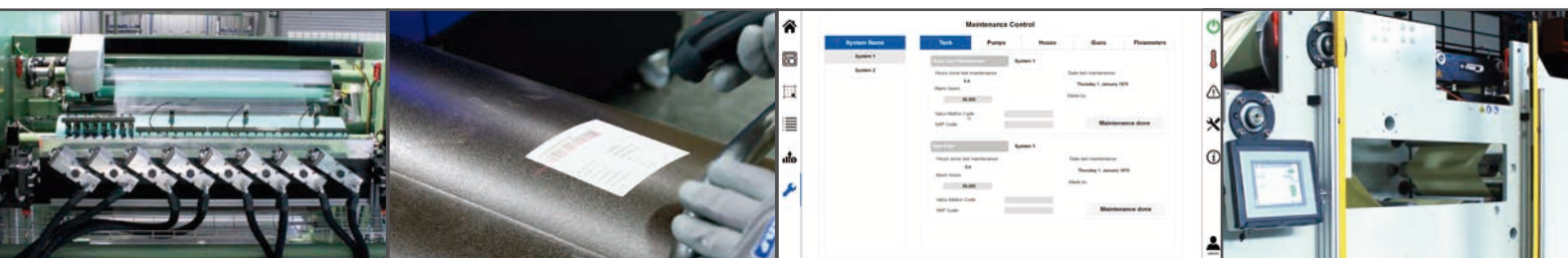
Incorporating barcode readers with Valco Melton specific software allows the system to scan the production order for an automatic recipe loading and parameter setting. Additionally, consumables such as adhesives or substrates, may be scanned before production to prevent mix-ups. Printing a final product label ensures complete production traceability.

SmartControl

Valco Melton's SmartControl allows the system to visualize and program recipes, update parameters and set alarms for all the hot melt systems in a centralized manner, directly from the main machine PLC. Additionally, the system allows users to check and generate reports on adhesive consumption by melter, by adhesive reference, and by product/recipe. SmartControl helps simplify and automate maintenance by programming preventive maintenance tasks and keeping record of each operator's maintenance actions.

SAFETY ELEMENTS

All of our coating lines comply with the CE-mark. Our range of safety elements includes options such as a safety laser scanner with configurable security levels, safety light curtain, or emergency stops.



PROVIDING A COMPLETE MELTING & DISPENSING SOLUTION

As a worldwide leading supplier of adhesive dispensing equipment, Valco Melton offers a comprehensive solution that not only includes a custom designed coating line, but also adhesive melting or pre-melting units, applicators and accessories for any adhesive related need.

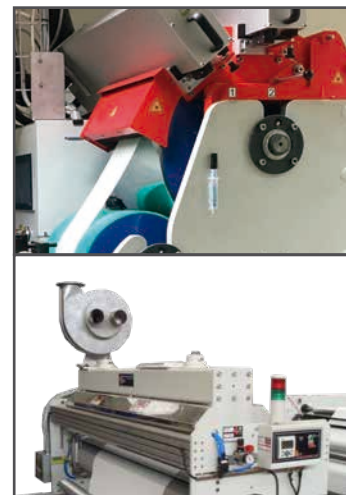


ACCESSORIES

Our coating lines are prepared to integrate, at any time, corona treatment and UV lamps.

For those manufacturing processes that require the use of UV curable, acrylic-based PSA, our coating lines feature **UV lamps** over the laminating roll. Adhesive reacts to the UVC, increasing its properties (cohesion, shear strength and thermal stability). Success depends on correct UVC dose. The number of UV lamps and the diameter of the laminating roll is defined for each project.

When working with PP, PE, PET, PA, PP met, PE met, or PET met, it is necessary to increase the surface tension of the substrate to a range between 42 to 54 dynes/cm, in order to have a good adhesion of the coated material. In this case, we recommend the installation of a **corona treater**, which will be defined depending on each project specifications.



UPGRADE OPTIONS

Valco Melton offers a wide range of accessories and upgrade options to adapt to each project's individual specifications, including:

Additional chill rolls for processes that require extra cooling of the adhesive before rewinding. These rolls are chromed, motorized, and their diameter is defined for each project.

Slitters. Whether they are needed to trim the edges, crack back, or to cut the roll into multiple end rolls, our solution includes pneumatic slitters with manual positioning and a hardened cutting roll with position adjustment for a longer roll life.

To facilitate the splicing process, our coating lines may integrate a complete **splicing unit** with an end of substrate detector for automatic line stop and material fastening system.

For easier roll loading and unloading, our unwinders and/or rewinders may incorporate a **hydraulic arm**, which automatically brings the roll to working position.



SELECT FROM A COMPREHENSIVE RANGE OF ADHESIVE APPLICATORS

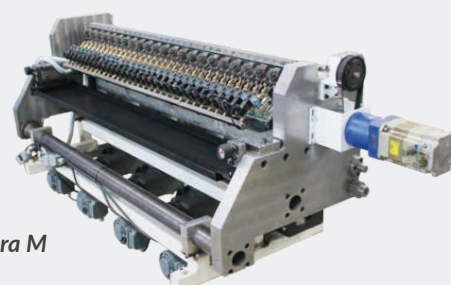
A selection of coating applicators is available to cover all industry requirements.

The **Endurance** Series features a motorized width adjustment.

The **ConvertCoat** Series is the optimal solution for clear-to-clear label manufacturing.

The **Akura** Series guarantees an optimal adhesive distribution across the width, which is obtained automatically by incorporating multiple adhesive inputs with controlled dosing (metering head). Additionally, Akura Series brings higher flexibility thanks to interchangeable nozzles. Options include rotating bar, continuous and intermittent applications.

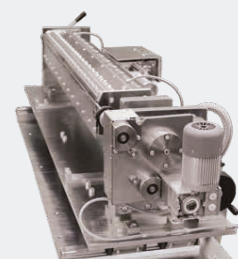
Akura M



Endurance



ConvertCoat



Global Headquarters

Cincinnati, USA
+1.513.874.6550 | info@valcomelton.com

The Americas, Manufacturing, Sales & Service Centers

Ciudad de Mexico, Mexico
+52.55.627831727 | mexico@valcomelton.com

Bogota, Colombia
+57.313.421.0926 | colombia@valcomelton.com

Sao Paulo, Brazil
+55.11.3071.2117 | brazil@valcomelton.com

ClearVision Technologies
Vancouver, Canada
+1.604.998.4012 | canada@valcomelton.com

GMS-VanSco - USA West Coast
Petaluma, CA, USA
+1.707.285.3392 | inquiry@gmsvansco.com

Asia - Pacific Manufacturing, Sales & Service Centers

Bangalore, India
+91.80.46553300 | india@valcomelton.com

Shanghai, China
+86.592.591.7854 | china@valcomelton.com

Singapore
+65 850 95355 | singapore@valcomelton.com

Quezon City, Philippines
+63 917 535 0891 | philippines@valcomelton.com

Jakarta, Indonesia
+62 811 9112872 | indonesia@valcomelton.com

Tokyo, Japan
+81 80 7347 9242 | japan@valcomelton.com

Ho Chi Minh City, Vietnam
+84 938 828 875 | vietnam@valcomelton.com

Malaysia
+60 1114 344 981 | malaysia@valcomelton.com

Europe, Middle East & Africa Manufacturing, Sales & Service Centers

European Headquarters
Orkoien, Spain
+34 948 321 580 | spain@valcomelton.com

Düsseldorf, Germany
+49 211 984 798-0 | germany@valcomelton.com

Brescia, Italy
+39 030 2732544 | italy@valcomelton.com

Nieuw-Vennep, The Netherlands
+31 252-673673 | benelux@valcomelton.com

Telford, England, UK
+44 1952-677911 | uk@valcomelton.com

Długoleka, Poland
+48 71 889 04 50 | poland@valcomelton.com

Fleurieu-sur-Saône, France
+33 (0) 4 75 78 13 73 | france@valcomelton.com

Budapest, Hungary
+36 1-214-4705 | hungary@valcomelton.com

Prague, Czech Republic
czech@valcomelton.com

Istanbul, Turkey
+90 212 327 99 71 | turkey@valcomelton.com

Sharjah, UAE
+971.521305960 | uae@valcomelton.com

Riyadh, Saudi Arabia
+966 544659139 | saudi-arabia@valcomelton.com

Lagos, Nigeria
+234 812 379 1199 | nigeria@valcomelton.com

ERO s.r.l
Brescia, Italy
+39 030 2731503 | info@ero-glucers.com

**Direct offices and authorized distributors
across 96 locations worldwide**



ALL LOCATIONS



Adhesive Dispensing & Quality Inspection Systems