

A detailed view of an industrial label manufacturing machine. The machine features a long, horizontal track with numerous small, dark, cylindrical components. A robotic arm is visible on the left side, and several electrical connectors with black cables are attached to the right side of the track. The background is a light-colored, slightly textured surface.

GLUING & QUALITY INSPECTION SOLUTIONS FOR

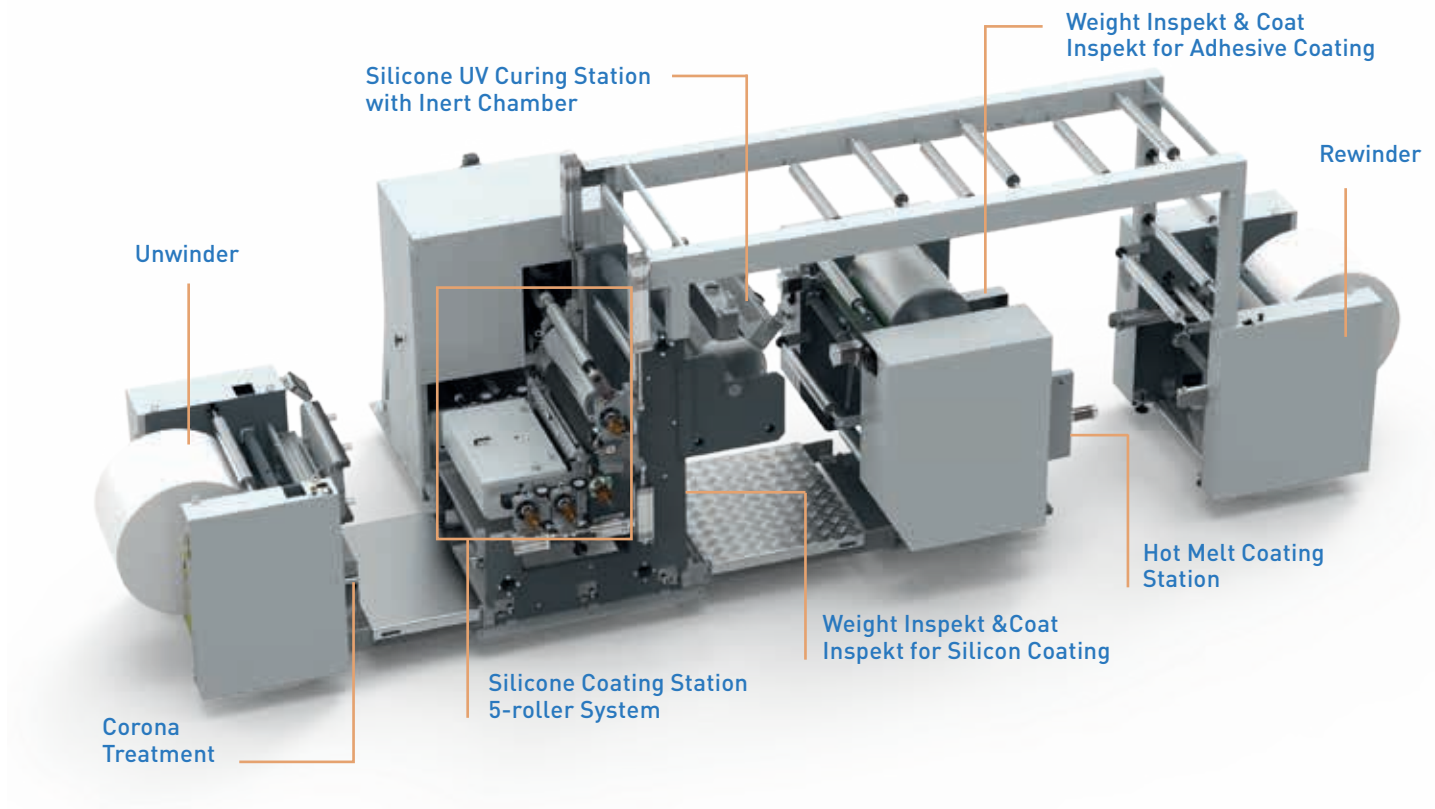
LABEL MANUFACTURING

PROCESSES



Adhesive Dispensing & Quality Assurance Systems

LINERLESS COATING LINES



LINE ACCESSORIES AND UPGRADES

- Weight Inspekt: grammage control system for silicone and adhesive coatings.
- Coat Inspekt: Vision system to detect defects on substrates and coatings.
- UV Lamps.
- Corona treatment.
- Automatic Splice Turret Rewinder.
- Automatic Butt Splicer Unwinder.
- Slitting Unit.
- Turret rewinder with 4 shafts and automatic change of cycle.
- Flexographic Printing Groups.
- Die Cutting Unit.
- Automatic Core Hopper & Loader System.

LINERLESS KEY ADVANTAGES



Reduce Label Manufacturing Costs by Up to 25%

- Lower transport and logistics costs.
- Increased roll capacity: 30%-40% more labels per roll = fewer roll changes
- Raw Material Inventory Optimization: Use a single substrate to produce any label type = no need to stock multiple materials.



More Sustainable labels. Zero Backing Paper = No Liner Waste

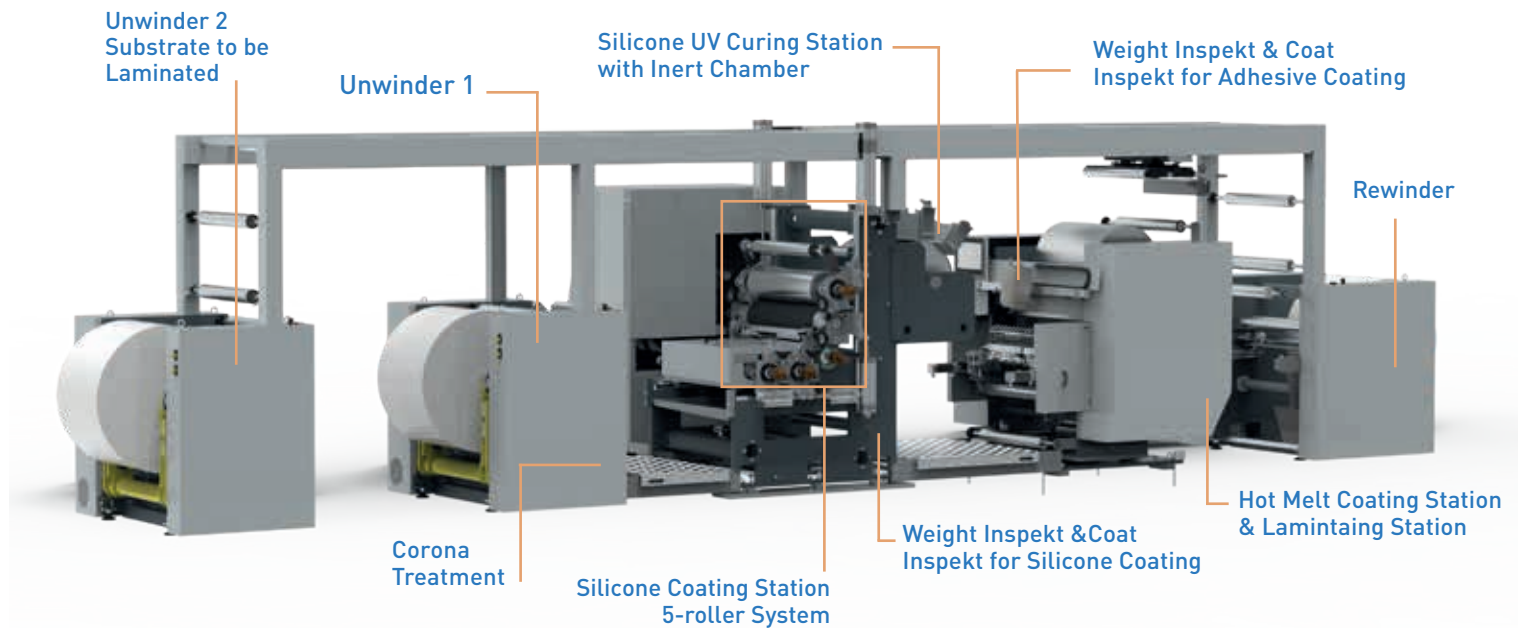
- Reduced waste and cleaner production environment.
- Lower emissions. No incineration required - reduces CO₂ footprint.



Label Configuration Flexibility

- Printing on one or both sides; pre-print with logo, watermark, or continuous strip.
- Printing different lengths without having to change the roll.
- Simplifies Handling: No liner removal needed - faster and safer label application.
- Custom Adhesive Configurations: choose different adhesive types, weights, and strip positions.

LINERLESS & LABELSTOCK COATING LINE



Coating Line Specifications

Coating Line	350	560	660
Web width (mm)	150 - 360	330 - 570	330 - 670
Mechanical speed (m/min)	200		
Web thickness (gsm)	40-250		
Web tensión (N/m)	30-300		
Silicone Coating Weight (gsm)	5 -Roller system 0.5-2.5		
Adhesive coating weight (gsm)	Rotating bar 10- 45 / Slot 20-200		

BENEFITS OF IN-HOUSE SPECIALTY LABEL MANUFACTURING



Expand Your Product Portfolio: Start manufacturing new high-added value label configurations in a cost-efficient way, even with short print runs.

- Labels where we apply adhesive over the printed side: reverse printing or double-sided printing.
- Multilayer constructions: piggyback labels and extended content labels (booklet, peel & reseal, dry release).
- Labels with a pattern adhesive coating: stripe, square, window-frame, or dual adhesive coatings.
- Linerless labels.



Reduce Purchasing Costs: For applications that require a specialty adhesive or format, purchasing raw materials is more cost-efficient than purchasing and keeping inventory of multiple pre-coated stock alternatives.

- Ability to work with last minute orders and small print runs for specialty labels.
- Optimize your stock by manufacturing different products with the same stock and different adhesive grades or add-ons.

AKURA COATING STATION

Incorporate hot melt coating capabilities to your label printing process with Valco Melton's Akura Coating Stations. Achieve homogeneous and streak-free coatings on continuous applications up to 660mm wide.



Expand your product portfolio and increase productivity.

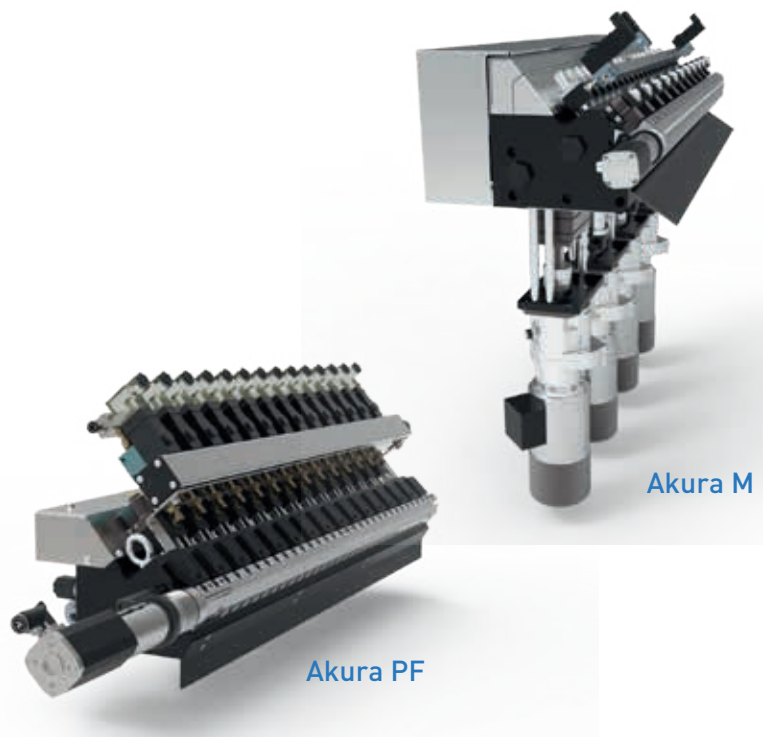
Incorporating Akura Coating Stations into your printing line enables you to add specialty formats to your product range in a cost-efficient manner.

Install anywhere.

Constructed to be either a permanent fixture on existing machines or fully mobile wheel-in carts.

APPLICATORS

- Akura PF applicators feature a number of independent hydraulic zones, each fed by a gear pump, to ensure an even distribution of the adhesive across the full web width.
- Akura M incorporate single or multi-stream gear pumps on the applicator for an immediate hydraulic response, even during machine ramp up.



LIP OPTIONS

A quick-change nozzle fastening mechanism allows for simple changes from one nozzle type to another. Options available include:

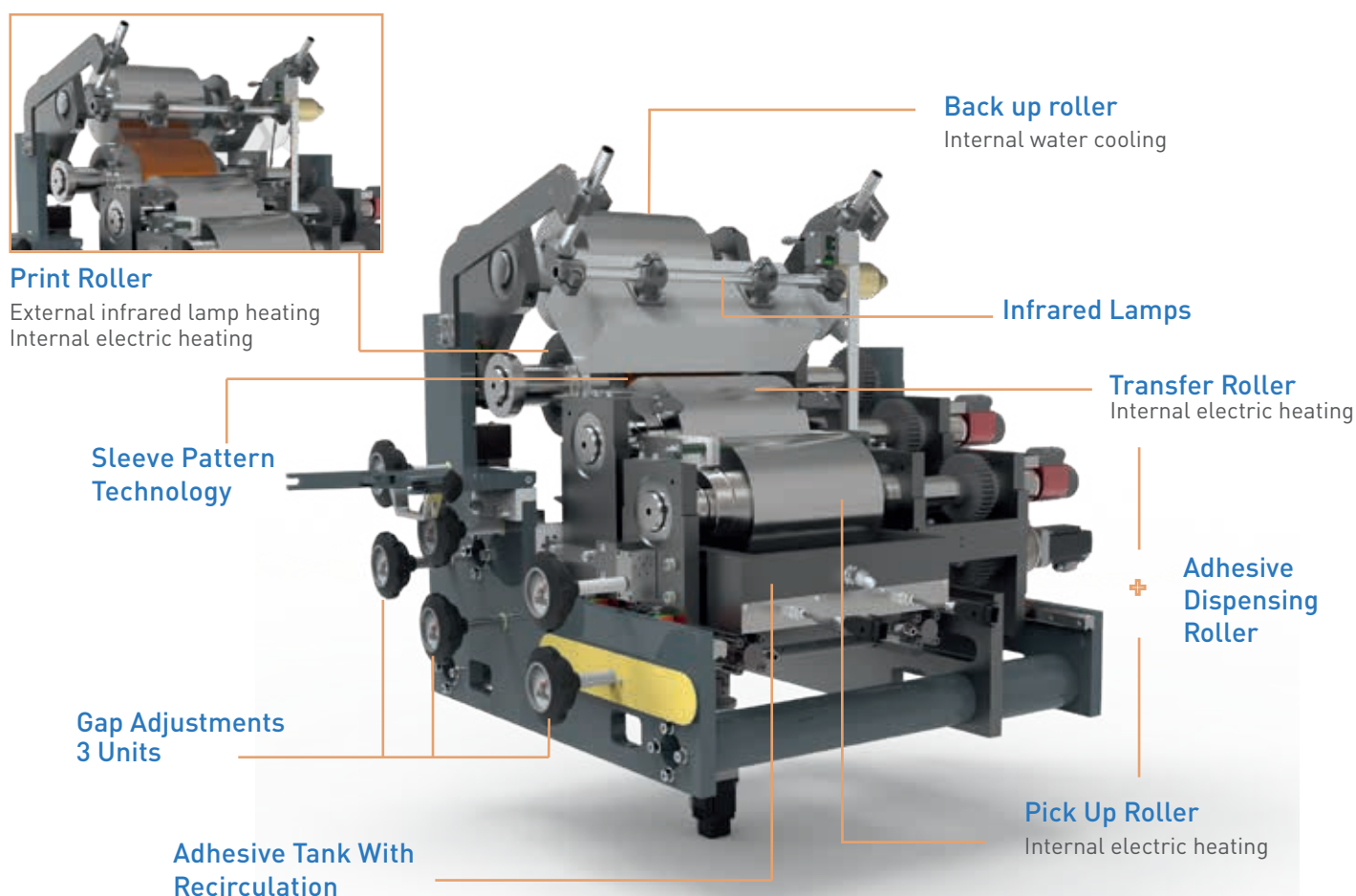
1. Continuous application nozzle
2. Intermittent application nozzles
3. Rotating bar nozzle



AKURA PATTERN ROLL COATER

Why use Hot Melt Roll Coaters for Pattern Coatings?

- Suitable for all hot melt adhesives.
- No limitations on adhesive pattern configuration.
- Clean Edge: Consistent, precise application with no adhesive stringing.
- No minimum gap or coating threshold.
- Consistent performance over time, with no recurring spare part costs or module wear.
- Fast job changeovers thanks to a flexible and user-friendly sleeve system.



Akura Roll Coater Features

Precision Temperature Control

Process temperature is continuously monitored and tightly regulated to maintain optimal coating conditions and material performance.

Individually Motorized Rollers

Each roll in the adhesive pattern coating station is independently driven, allowing precise speed control to ensure uniform adhesive distribution and consistent high-quality coating.

Working Parameters

Application Speed	Up to 100 m/min
Coating Weight	4 - 100 gsm
Adhesives	Hot Melt PSA, UV Curable Adhesive

SILICONE COATING STATION

ADVANCED SILICONE COATING STATION

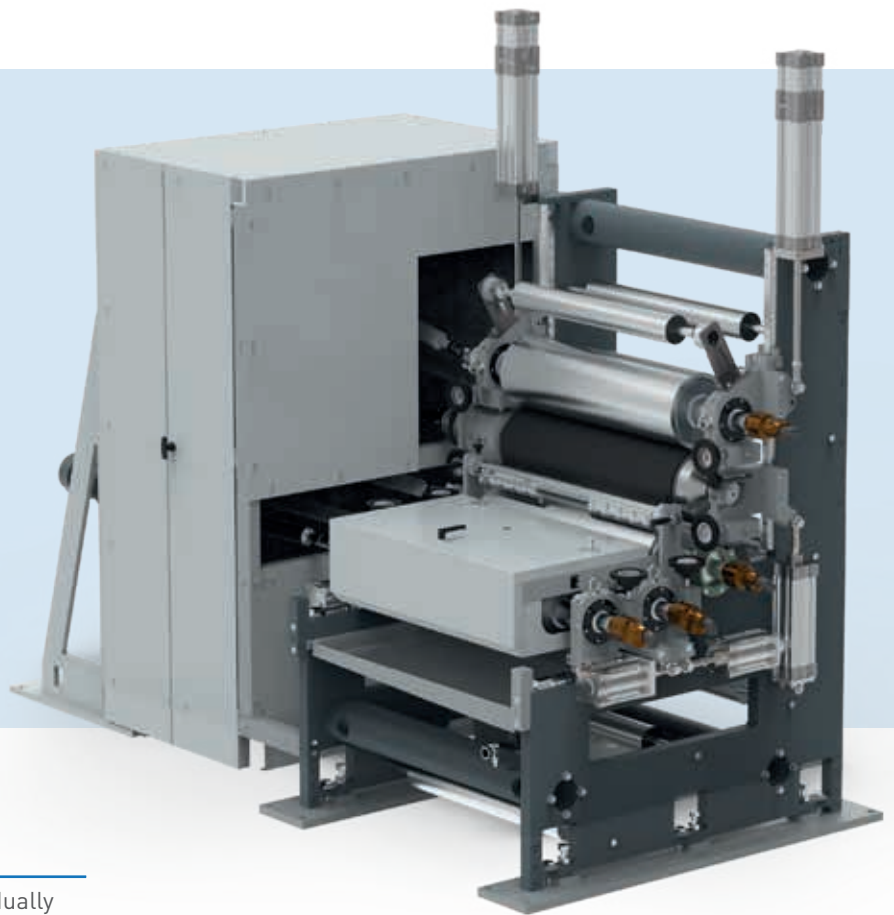
Valco Melton's 5-roller silicone coating stations are designed to work with UV free radical silicones, and substrates ranging from glassine and SCK papers to BOPP, PE and PET FILMS.

5-Roller Precision System

Ideal for low silicone coat-weight applications, our 5-roller configuration uses a progressive metering design:

- The first rollers set the base silicone dosage using precise gap control.
- Subsequent rollers gradually reduce the coating thickness through a combination of pressure and speed differentials.

This process ensures consistent ultra-thin silicone layers with minimal waste.



Independent Drive Technology

Each roller in the silicone coating station is individually servo-driven, allowing variable speed control and precise synchronization throughout the coating process. This ensures:

- Superior coat weight control.
- Uniform application.
- Elimination of pinholes or coating defects.

Quick-Swap Sleeve Technology

Silicone patterns are integrated into interchangeable roller coater sleeves, enabling faster changeovers between jobs.

- **More uptime:** a pneumatic device allows operators to quickly open the space between rollers, facilitating access for cleaning and maintenance and simplifying sleeve and roll replacements.
- **Increased flexibility in label formats:** fast and simple changes between different coating widths or patterns.

UV Curing Chamber

Our 5-roller UV Silicone Coating system offers **independent A.C. drives, precise micrometer adjustments**. A precision engineered UV curing chamber incorporates:

- 2 UV Mercury lamps.
- Big chill roller for cooling substrate.
- Slide out quartz windows and inert gas injection system.

INSPEKT QUALITY INSPECTION

In today's global marketplace, quality serves as a competitive differentiator, allowing companies to gain:

- **Operational excellence** through reduced waste and improved efficiency.
- **Customer confidence** through guaranteed defect-free products.
- **Regulatory compliance** through advanced tracking capabilities.
- **Market responsiveness** through real-time quality data.



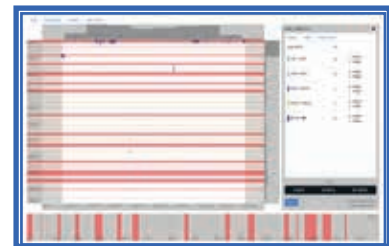
Lumilio, Valco Melton's brand for quality inspection solutions, stands at the forefront of quality control revolution for the coating and converting industries.

COAT INSPEKT

Vision Inspection Systems

These systems provide **immediate operator feedback**, enabling rapid response to process deviations while minimizing waste. Coat Inspekt transforms isolated data into integrated process transparency.

- **Real-time error detection and AI-based defect categorization** for immediate corrective action.
- **Comprehensive roll defect mapping** with waste areas marked for removal.
- Provide the **connectivity with the subsequent stations (slitting)** to communicate the defect location using a defective area map, enabling a smooth defect removal and rework process.



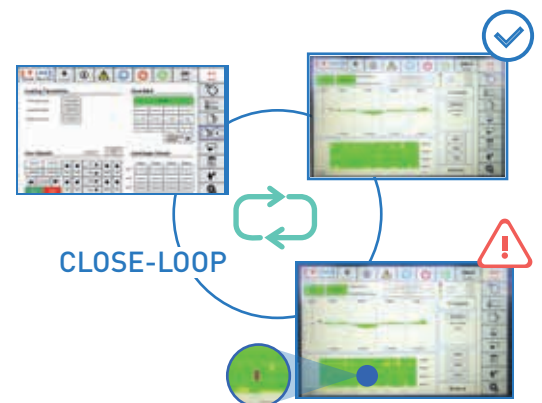
WEIGHT INSPEKT

Infrared Grammage Control Systems

These in-line grammage control systems measure the coating weight independently of the substrate thickness. This is crucial for maintaining a **consistent adhesive or silicone coat weight across the full web width**.

When working with Akura Series hot melt applicators, Weight Inspekt:

- **Automatically adjusts any grammage deviation** by working in close loop with the dosing gear pumps.
- **Real-time error detection and correction with no operator intervention.**



COMPLETE PRODUCT TRACEABILITY

Detailed information about the product batches can be printed and transferred to the following step of the process: from raw materials and working parameters such as temperature, pressure, speed, and consumables to the finished roll adhesive distribution map from Weight Inspekt and the defect roll map from Coat Inspekt. This provides companies with **traceability and a better understanding of production events**.

Additionally, transferring the information and position of defects detected by Coat Inspekt and Weight Inspekt systems to the slitting station, provides essential information for the **effective planning and execution of recovery or rework operations**.

Global Headquarters

Cincinnati, USA
+1.513.874.6550 | info@valcomelton.com

The Americas, Manufacturing, Sales & Service Centers

Ciudad de Mexico, Mexico
+52.55.627831727 | mexico@valcomelton.com

Bogota, Colombia
+57.313.421.0926 | colombia@valcomelton.com

Sao Paulo, Brazil
+55.11.3071.2117 | brazil@valcomelton.com

ClearVision Technologies
Vancouver, Canada
+1.604.998.4012 | canada@valcomelton.com

GMS-VanSco - USA West Coast
Petaluma, CA, USA
+1.707.285.3392 | inquiry@gmsvansco.com

Asia - Pacific Manufacturing, Sales & Service Centers

Bangalore, India
+91.80.46553300 | india@valcomelton.com

Shanghai, China
+86.592.591.7854 | china@valcomelton.com

Seoul, Korea
+82 10 6781 3642 | korea@valcomelton.com

Quezon City, Philippines
+63 917 535 0891 | philippines@valcomelton.com

Jakarta, Indonesia
+62 811 9112872 | indonesia@valcomelton.com

Tokyo, Japan
+03-6423-0397 | japan@valcomelton.com

Ho Chi Minh City, Vietnam
+84 938 828 875 | vietnam@valcomelton.com

Kuala Lumpur, Malaysia
+60 1114 344 981 | malaysia@valcomelton.com

Europe, Middle East & Africa Manufacturing, Sales & Service Centers

European Headquarters
Orkoien, Spain
+34 948 321 580 | spain@valcomelton.com

Düsseldorf, Germany
+49 211 984 798-0 | germany@valcomelton.com

Brescia, Italy
+39 030 2732544 | italy@valcomelton.com

Nieuw-Vennep, The Netherlands
+31 252-673673 | benelux@valcomelton.com

Telford, England, UK
+44 1952-677911 | uk@valcomelton.com

Długoleka, Poland
+48 71 889 04 50 | poland@valcomelton.com

Fleurieu-sur-Saône, France
+33 (0) 4 75 78 13 73 | france@valcomelton.com

Budapest, Hungary
+36 1-214-4705 | hungary@valcomelton.com

Prague, Czech Republic
czech@valcomelton.com

Istanbul, Turkey
+90 212 327 99 71 | turkey@valcomelton.com

Sharjah, UAE
+971.521305960 | uae@valcomelton.com

Riyadh, Saudi Arabia
+966 544659139 | saudiarabia@valcomelton.com

Lagos, Nigeria
+234 812 379 1199 | nigeria@valcomelton.com

ERO s.r.l
Brescia, Italy
+39 030 2731503 | info@ero-gluers.com

Direct offices and authorized distributors
across 96 locations worldwide



ALL LOCATIONS



Adhesive Dispensing & Quality Inspection Systems