

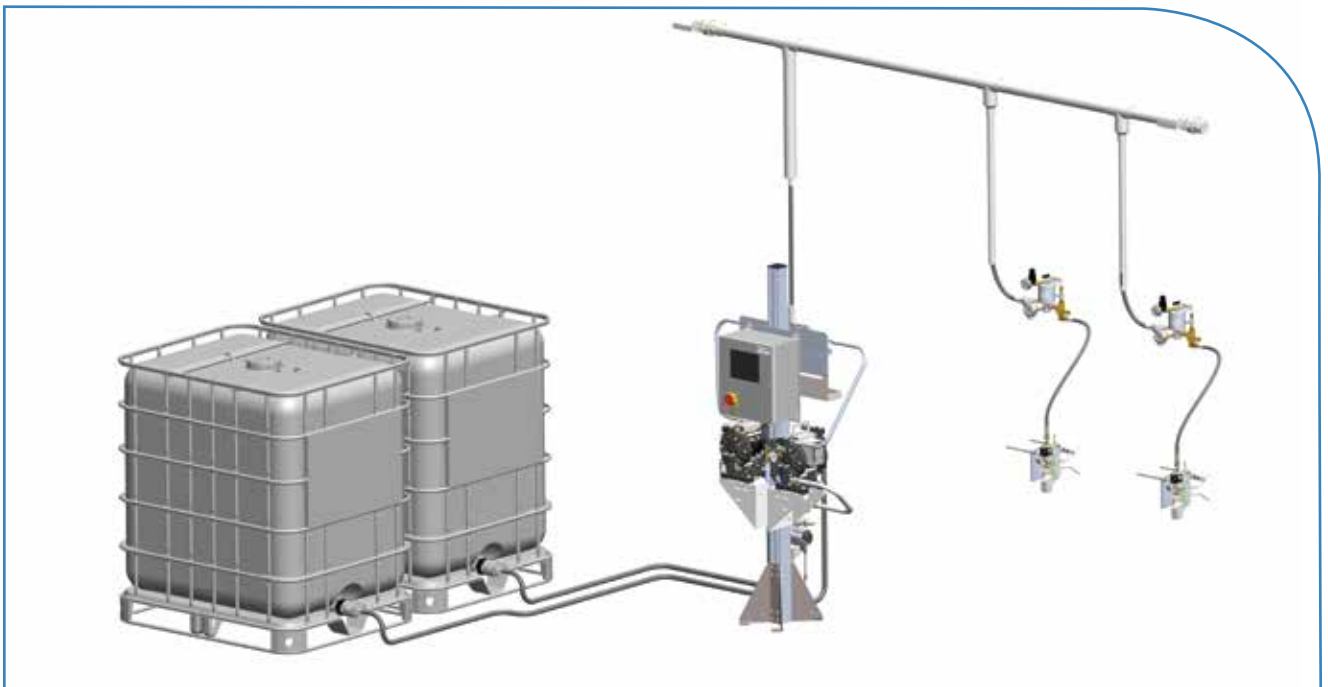
INTELLIGENT CENTRAL PUMPING STATIONS

Intelligent Central Adhesive Pumping Stations

The Intelligent Central Pumping Station transforms traditional adhesive supply systems into fully automated, monitored operations.

Built on our DD1 pump platform with advanced intelligent controls, this system eliminates manual adhesive monitoring & maximizes uptime while preventing air from entering your lines through automatic tote switching. The system collects comprehensive consumption data, tracks tote replacement timing, and provides management visibility into usage trends and staff accountability.

Designed for corrugated, folding carton, envelope, and any multi-line facility using centralized adhesive distribution.



Benefits:

- Eliminate production stoppages due to empty adhesive supplies with automatic tote switching
- Improve inventory management with real-time monitoring and data collection
- Eliminate dependency on manual adhesive level checking
- Reduce downtime with intelligent pump diagnostics and automated redundancy

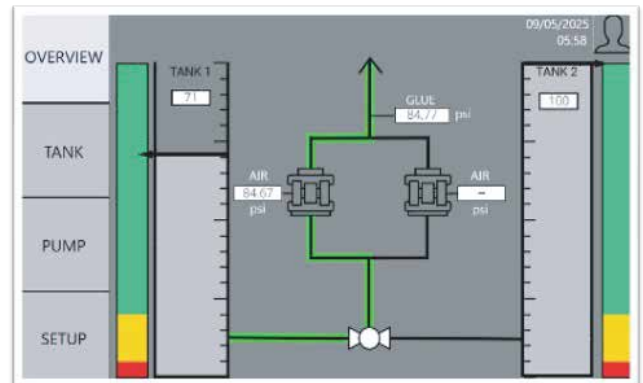


INTELLIGENT SYSTEM MONITORING & DATA COLLECTION

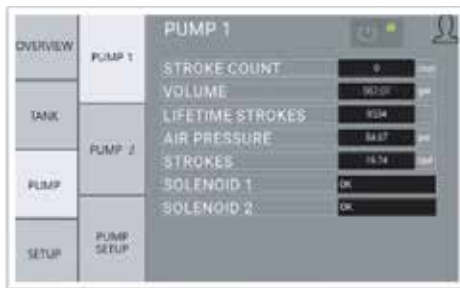
Real-Time System Monitoring

The intuitive touchscreen HMI provides operators with visibility into system status.

- **Tank Level Monitoring.** Real-time adhesive levels for both tanks with visual indicators
- **System Pressure Monitoring.** System glue pressure and input air pressure tracking
- **Automatic Tote Switching.** Valve position indicator show active supply tank
- **Pump Status.** Live pump operation status and flow visualization



Configurable Alerts & Pump Diagnostics



- Adjustable warning and alarm thresholds
- Pump stroke counting & volume tracking
- Solenoid status monitoring
- Output & input air pressure monitoring

Data Collection & Consumption Tracking

Track adhesive consumption trends over time with historical data logging. Know exactly when totes were replenished and monitor patterns for better inventory planning.

- Replenishment data tracking
- Volume consumption logs
- Historical trend graphs
- Tank switchover records



For more information, visit valcomelton.com or contact your local representative
 World Headquarters: Cincinnati, OH, USA • Tel: +1 513 874 6550
 Europe Headquarters: Orkoien, Spain • Tel: +34 948 321 580

