



TOTAL SOLUTIONS PROVIDER OF
GLUING & INSPECTION SYSTEMS TO THE
FOLDING CARTON
INDUSTRY



VALCO MELTON

Adhesive Dispensing & Quality Assurance Systems



GLUING SYSTEMS

A Valco Melton Company

CONTROLS

ONEVIEW

The new OneView allows intuitive and fast control from a touch-screen. Portable and lightweight, OneView is the central display for multiple MCP-4J, MCP-8, and MCP-8i units for up to 48 valves.



- Available in 10" and 22" screen dimensions
- Supports contact and non-contact applications
- Supports multiple valves and sensors for folder-gluer applications as well as multi-point gluer applications
- Familiar ClearVision gluing interface and easy connectivity
- Job storage of up to 1000 jobs
- OEM communication
- Simple glue station reconfigurability
- Right- and left-hand machine screen configurations
- New sensor screens with glue, flap length, and barcode inspection, as well as sensor signal diagnostics



MCP-8/MCP-8i



- Use with OneView screens or connect one or more to any ClearVision system to display gluing screens on the 'gluer' tab of the ClearVision system
- Pneumatic and electronic pressure control outputs
- 8 valves, 8 scanners (MCP-8) or 4 valves, 4 scanners, 3 sensors (MCP-8i)
- Supports contact and non-contact gluing stations
- Jam preventer (4 or 8 Channel)
- Job storage (100)
- Batch count
- Auto-configuring voltage 90-240VAC
- Internal/external pressure control
- Available in Imperial and Metric
- Backup/restore to/from external media
- OEM communication
- Scanner lockout
- Auto-glue mode
- Pulse-purge
- Stitched patterns and jog on restart

In addition to the above features, the MCP-8i includes:

- 4-valves, 3-inspection sensors, 1 marking valve, kicker or pneumatic rotary ejector
- Supports CGS-40 and CGS-40S, as well as AS-304, glue inspection sensors and laser barcode readers
- Scanner lockout
- MCP-8/8i units supplied with OneView screens will have the front panel screen and keypad replaced with a blank cover plate

MCP-4J

- Compatible with OneView screens
- 4-Valves, 4-Scanners
- Auto-configuring voltage 90-240VAC
- Internal/external pressure control
- Job storage (100)
- Available in Imperial and Metric
- LED display plus push-button overlay
- Auto-glue mode
- OEM communication
- Pulse-purge
- Stitched patterns with jog on restart
- Data sharing with CartonChek
- USB port for system backups and software updates
- Batch count
- Scanner lockout
- Vertical or horizontal mounting



VCX/OT-120



- Up to 16 channels in modules of 4 in a combination of sensors and valves
- Jam preventer (up to 16 channels)
- Auto-configuring voltage 90-240VAC
- Internal pressure control (up to 4)
- External pressure control (up to 4)
- Easily recognized icon-based access to gluing inspection
- Job storage (1000)
- Batch, supports tracking and all forms of ejection
- Available in Imperial and Metric
- 12" remote-mount color touch-screen
- Data sharing with CartonChek 7
- OEM communication
- Auto-glue mode
- Pulse-purge
- Stitched patterns with jog on restart
- Scanner lockout
- Quality data collection and reporting
- SupportChek remote service access

COLD GLUE VALVES

524 LNLR VALVE

ELECTRIC EXTENDED NOZZLE VALVE

524 electric valve combines speed, small size, and dotting capability with a high flow rate to create a valve suitable for non-contact and contact applications.

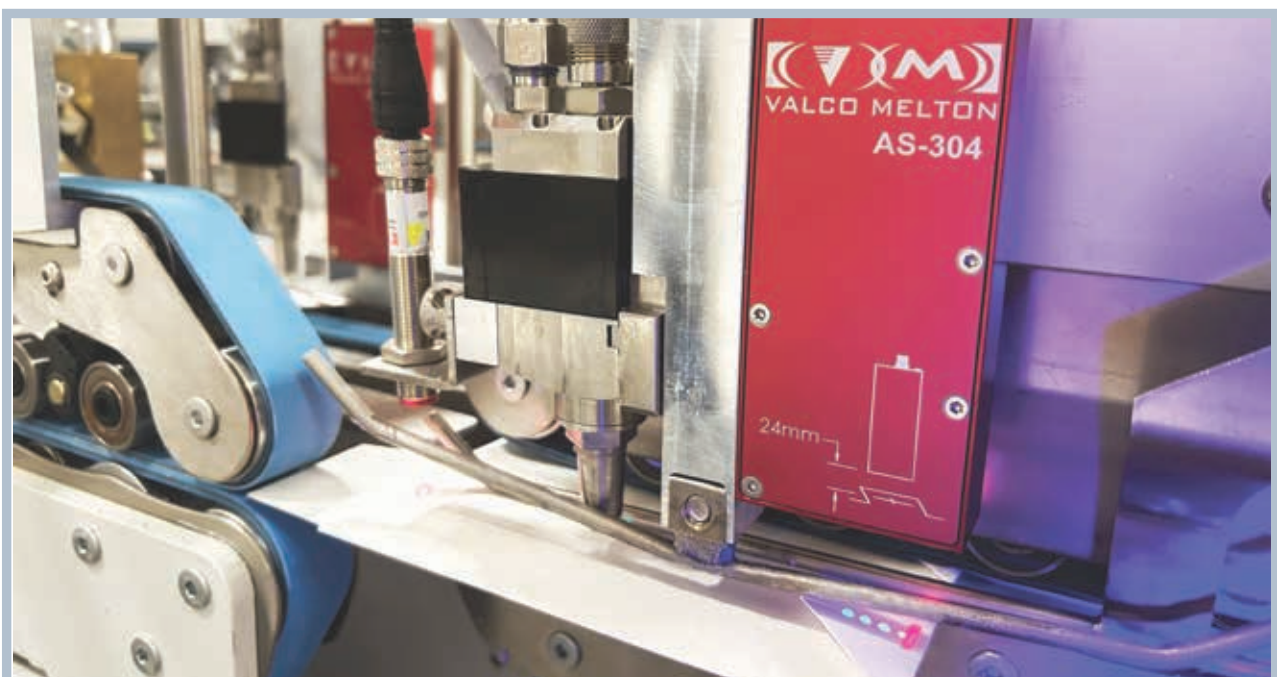
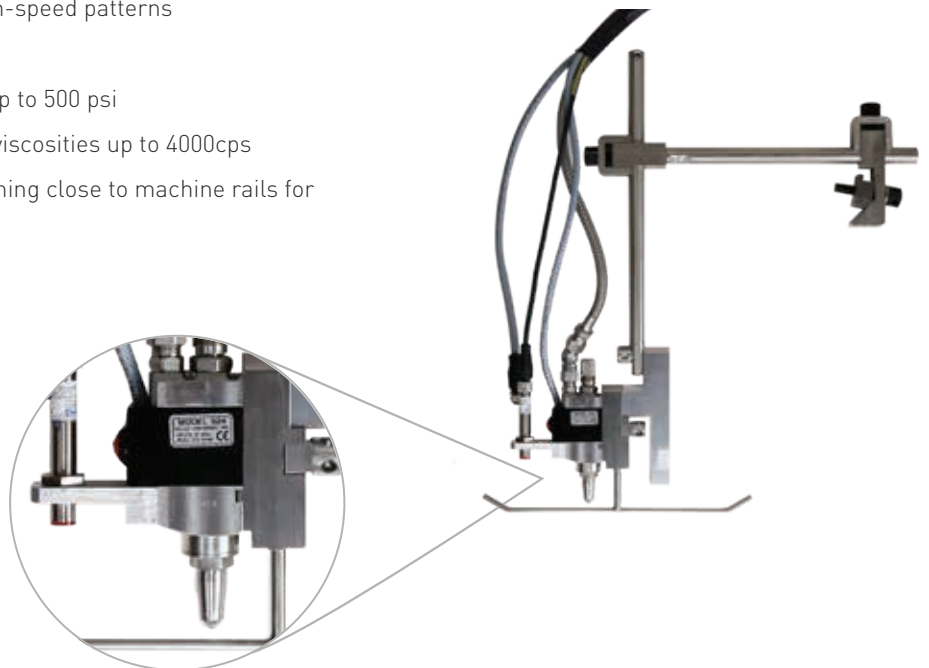
- Adjustable flow rate for precision high-speed patterns
- Integrated purge/test switch
- Capable of high-pressure operation up to 500 psi
- Compatible with a range of adhesive viscosities up to 4000cps
- Extended nozzle body permits positioning close to machine rails for installation flexibility
- Ceramic on ceramic ball and seat

WATCH VIDEO

524 LNLR VALVE



> <https://go.valcomelton.com/524-valve-video>

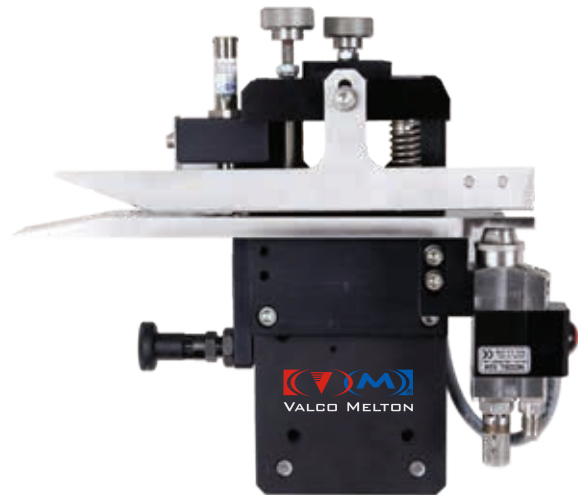


BOTTOM-UP GLUE STATION

SIDE SEAM GLUE POT REPLACEMENT

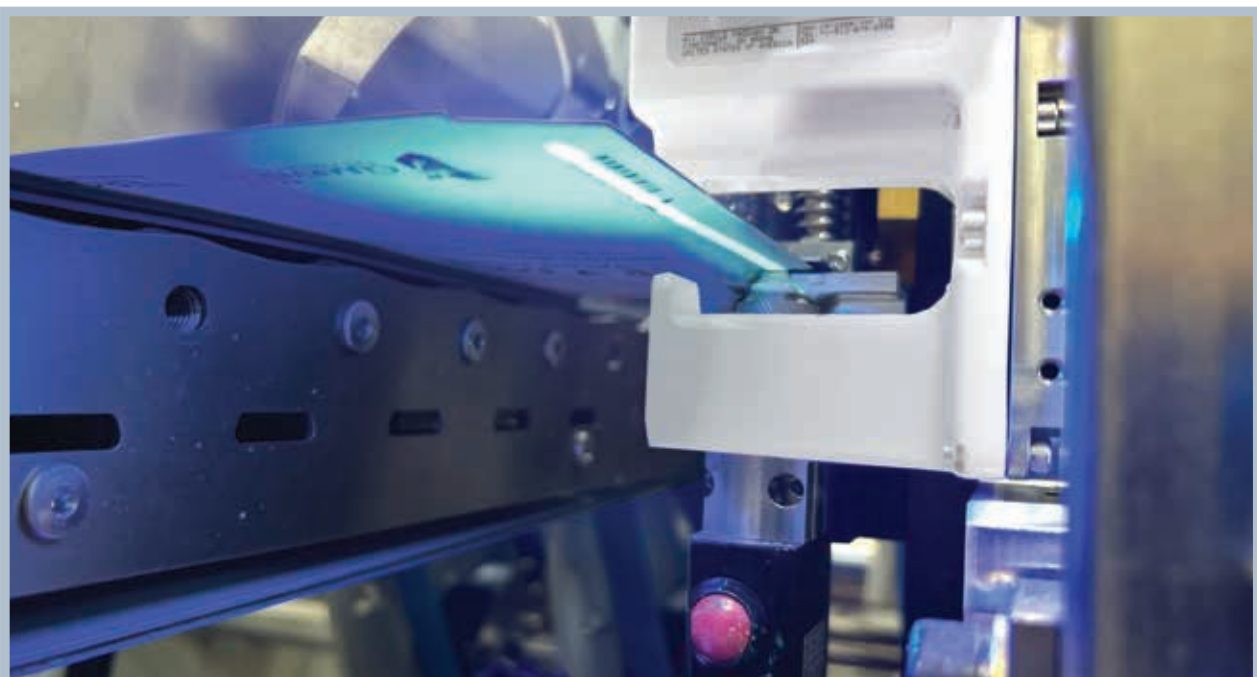
Valco Melton's bottom-up gluing station offers producers an alternative to messy, labor-intensive glue pots. The system provides precise glue application without cleanup due to adhesive slinging. Product quality is improved, and production flexibility is achieved by applying precise glue patterns with the ability to use a wider range of adhesives.

- Can be installed on most folder-glueers
- All-electric highspeed precision glue valve
- Reduces adhesive usage
- Eliminates maintenance and cleaning associated with glue pot
- Enhances machine performance and production versatility
- Glue detection available



WATCH VIDEO
BOTTOM-UP
GLUING STATION

> <https://go.valcomelton.com/bottom-up-station-video>



PUMPING SYSTEMS & BALANCING REGULATORS

PFRM-6

- Complete assembled package: 14:1 pump, filter, 6:1 balancing regulator, 4-port manifold
- Shaft/seal cartridge for fast and simple repair
- Drum mount, wall mount, and pail mount options



EPP-9

- High flow-rate 9:1 piston pump
- Low glue level detection with optional probe
- Electronic reversing
- Intelligent SLOW MODE feature prevents high cycle rates that occur during priming or when adhesive supply is blocked or depleted (dry cycling)
- Available as single-acting
- Advanced seal technology for 4 times the life of previous piston pumps
- 24V power supply are available 115/230VAC transformer
- Easy to clean and install
- In excess of 50 bar available glue pressure



3:1, 6:1 BALANCING REGULATOR

- Pressure balancing regulator - relieves excess pressure that occurs during highspeed stops
- Ultra-precise and fast pressure control
- No shaft seals
- Easy rebuild
- No pattern flooding at restart
- Rolling diaphragm design for frictionless movement and no losses



COLD GLUE SENSORS

AS304/AS304H

COLD GLUE & HOT MELT SENSOR

- Fine Resolution: 0,04 in / 1 mm
- Compact Size: 0,8 in / 21 mm wide x 4,5 in / 115 mm tall x 2,36 in / 60 mm deep
- Functions with the CartonChek, VCX, and MCP-8i quality assurance systems
- Highspeed inspection for cold glue and hot melt adhesives
- No UV additive required



CGS-40S

SIDE-SEAM CAPACITANCE SENSOR

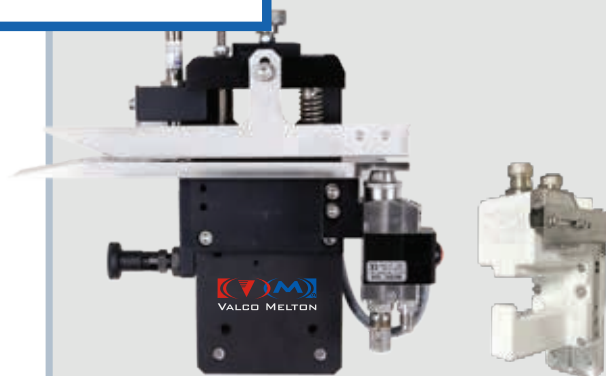
- Designed for side seam inspection
- Glue pot or closed system
- Indicator LEDs for supply voltage and signal output
- Polymer enclosure with a smooth surface for minimal build-up and easy cleaning



THE COMPLETE PACKAGE GLUING APPLICATOR & SENSOR



STANDARD GLUING



SIDE-SEAM GLUING

CDS CODE READER

COLOR AND BLACK & WHITE CODE READER

The CDS code reader is an indispensable tool for high-speed production. The code reader reliably monitors color (including foil stampings) or black-and-white barcodes. Valco's color-code-reading system provides inspection functions not possible with any other code reader, identifying:

- Mixed copy
- Missing color
- Color density
- Print registration
- Die-cut registration
- Skew
- Double-feed
- Binary codes (including Bobst and Pharma)



The color code reader comes with a pre-folder. A dual-color code reader is also available for carton applications with print on both sides.



WATCH VIDEO

CDS CODE READER

> <https://go.valcomelton.com/CDS-Video>



BAR CODE READER

LASER BARCODE SCANNER

Valco Melton's barcode reader inspects the following codes:

- Code 39
- Codabar
- Code 128
- Interleaved 2 of 5
- Code 93
- UPC / EAN / Pharma
- OMR (Optical Mark Recognition)

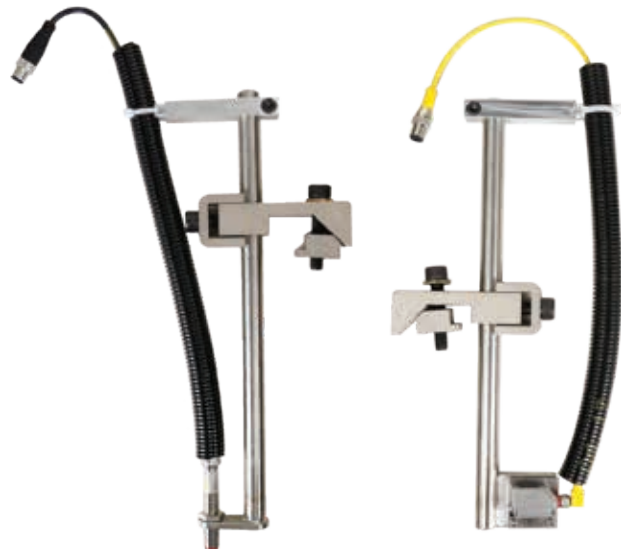


DIGITAL SENSORS

FOR CUSTOM DETECTION NEEDS

Valco Melton's sensors can cover several of your inspection needs. Configure to inspect aspects such as:

- Length and skew detection
- Flap detection
- Foil and window detection
- Label detection



EJECTORS, KICKERS & MARKERS

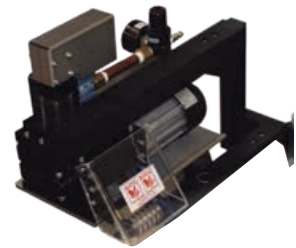
Valco Melton provides ejector devices that can function independently or be seamlessly integrated into a main machine, allowing for direct configuration from the main system.

ROTARY & LINEAR EJECTORS

Valco Melton offers high-speed Linear and Rotary Ejector systems that remove defective products before they can be processed.



Rotary ejector



Linear ejector

KICKER

The Valco Melton Kicker is ideally suited for batch counting and reject kicking applications. The Kicker offers a fast cycle time for smaller cartons and a compact design for flexible mounting requirements.

The Kicker features:

- Single kick eject
- Dual kick and count-eject optional

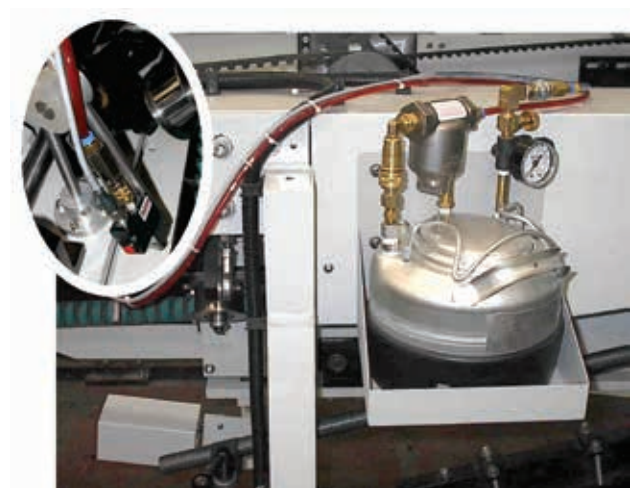


MARKING VALVE

The Marking Valve identifies every faulty product.

This valve includes a/an:

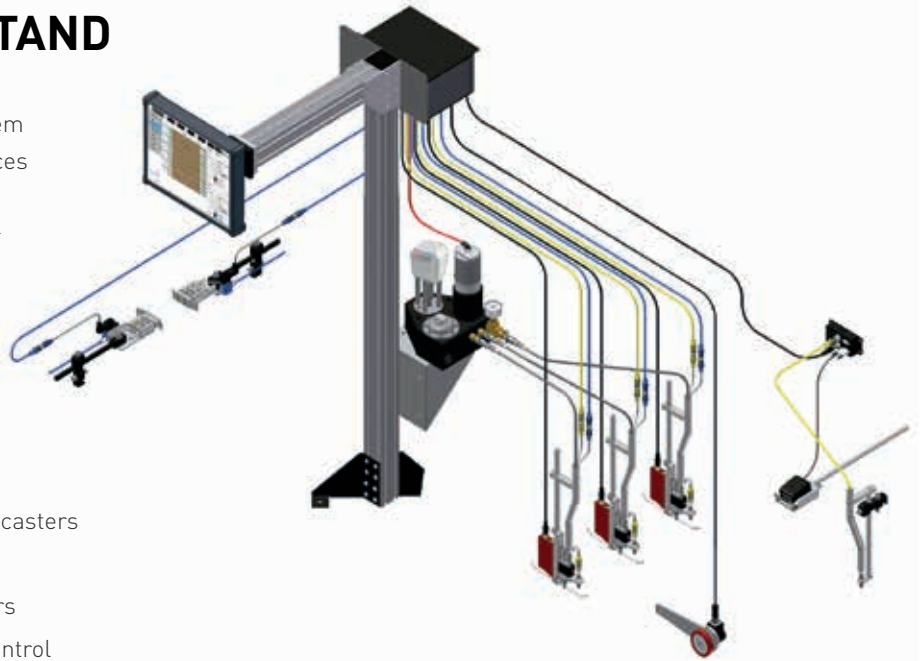
- Compact system
- Stainless steel tank
- All-electric, jetting or spray valve options
- Optional UV lamp kit



SYSTEM STAND & ACCESSORIES

MODULAR SYSTEM STAND

Valco Melton offers several options for system stands. The system stand significantly reduces initial installation time and provides a clean, organized installation for improved operator interface.



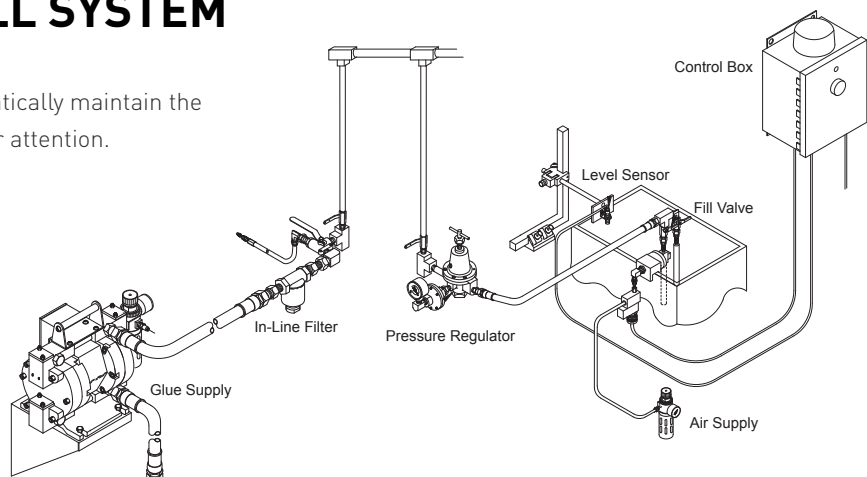
- Floor mount, machine mount, or optional casters
- Diaphragm pump or piston pump
- Single or multiple glue pressure regulators
- Selected for any standard Valco Melton control



System stand options are available for any system configuration.

AUTOMATIC POT FILL SYSTEM

Valco Melton Pot Fill System will automatically maintain the adhesive level without requiring operator attention.



THE HOT MELT ALTERNATIVE

The use of hot melt equipment is interesting in situations where an alternative to cold glue is needed, as it adheres less effectively to nonporous surfaces, such as laminated cardboard.

ECOSTITCH

ALL-ELECTRIC APPLICATOR

The MXM electric valve can operate at extremely high speeds, reaching 15,000 cycles per minute, and can handle more than 2 billion cycles before requiring service.

- Up to 75% of adhesive savings by applying glue dots
- Clean application
- Fast system payback
- Side feed or top feed assembly



MKF

COMPACT APPLICATOR

The MKF compact applicator is easy to install in areas with limited space. The air-open, air-close, zero-cavity design produces a clean adhesive shut-off for PUR and pressure-sensitive adhesives.

- Sharp cut-off for a clean application – no adhesive stringing
- Specially insulated for safe handling
- Zero cavity design – swift and accurate patterns



KUBE

ENERGY-EFFICIENT MELTER

The new generation of Kube energy-efficient melters optimizes the heating process and improves insulation, minimizing energy lost to the environment.

- User-friendly control panel
- Different sizes and melting capacities available
- Low-pressure pump available for processes with low adhesive grammage requirements
- I/O signals included as standard



ECOSTITCH

ALL-ELECTRIC MELTER

The new EcoStitch series melters are the most intelligent, versatile, and technologically advanced adhesive melters ever created and include Ethernet IP integration and digital pressure control. Adhesive usage data is available on screen with full OEM integration on all digital-based data.

- Digital closed loop pressure control
- Adhesive usage data
- Ethernet IP Communication System
- All-electric gear pump and integrated auto-feed system options



ISOMELT-MINI

PUR MELTER

Ideal for plastic packaging, the IsoMelt melter is designed to process reactive hot melts such as PUR. Its fully integrated, multi-functional controller allows for fast and easy configuration changes and provides 'key-to-line' capabilities. The swiveling tank lid allows for faster changes of PUR slugs, minimizing downtime.



VISION INSPECTION SYSTEMS

CARTONCHEK

Designed by ClearVision, the quality inspection systems brand of Valco Melton, CartonChek, ensures 100% inspection of the folding cartons produced before they reach the customer. With a choice of up to six camera systems, ClearVision's software does what sensors cannot do.

FEATURES & BENEFITS

- Detect and inspect the different aspects of your cartons to ensure a perfect product delivery to your customers.
- Minimize configuration times with the system's ability to learn the position of the cameras and sensors.
- Streamline support sessions using the online chat window.
- Intuitive interface that simultaneously displays real-time images, job statistics, defect images, and a history bar to facilitate analysis.
- Defect and performance data for all boxes are stored locally in the SQL database and can be easily accessed remotely with MeasurementChek for quick and comprehensive reporting.



MAKING QUALITY VISIBLE



GLUECHEK

GlueChek™ takes pictures of every glue pattern and analyzes them to ensure no gluing problems exist. When a gluing problem is found, GlueChek shows the defect on the screen, notifies operators by alarm, marks the defective box, and saves an image of the gluing problem. Box makers can now provide 100% perfectly glued boxes to their customers by identifying and removing all defects before shipment. Having saved a picture of every defect builds operator confidence, helps maintenance troubleshoot, checks for skewed boards, and increases customer satisfaction.

Use top-down and bottom-up cameras together for automatic “backside detection” to ensure glue is on the desired face of the sheet and not present on the opposite side. GlueChek automatically detects the backside. Opt for GlueChekPlus for camera-based glue inspection without the need for UV additives.

Faulty boxes can be detected at incredibly high speeds. As a result, our customers can boost production speed, save valuable time, and reducing delivery times.

WATCH VIDEO

GLUECHEK



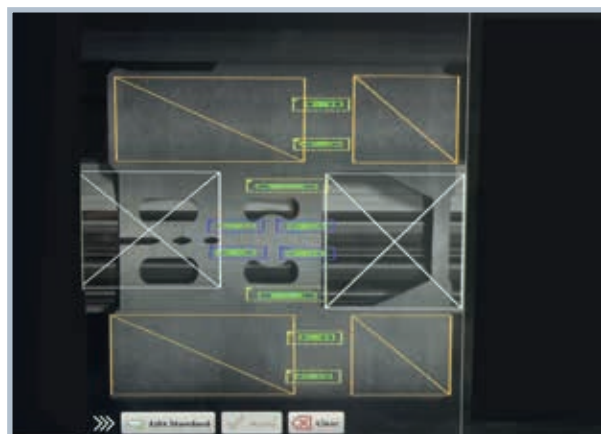
> <https://go.valcomelton.com/gluechek-video>



MEGAGLUECHEK

MegaGlueChek™ analyzes various patterns on a carton from one camera, eliminating the need to install more than one camera on the same production line.

For various fields of view, MegaGlueChek is available in increments of 5" / 12,7 cm, ranging from 5 to 30" / 12,7 to 76,2 cm.





CODECHEK

CodeChek™ eliminates customer quality problems caused by mixed copy. The CodeChek system detects most types of binary and 2D barcode formats, including UPC, Code 128, QR Code, and Data Matrix.

Capable of reading barcodes at high speeds of up to 30 boxes/sec in areas up to 58,42 x 58,42" / 23 x 23 cm, CodeChek adapts to your production requirements with the ability to mount the camera bottom-up or top-down.



WATCH VIDEO
CODECHEK

[➤ https://go.valcomelton.com/codechek-video](https://go.valcomelton.com/codechek-video)



WINDOWCHEK

The clear nature of plastic windows makes them naturally challenging to detect and inspect using machine vision. WindowChek™ technology utilizes the reflective properties of plastic to identify defective products for rejection.

WindowChek camera verifies the following features of plastic windows to guarantee the integrity of the packaging:

- Window height
- Window width
- Position
- Presence of contaminants
- Glue pattern or tape





BRAILLECHEK

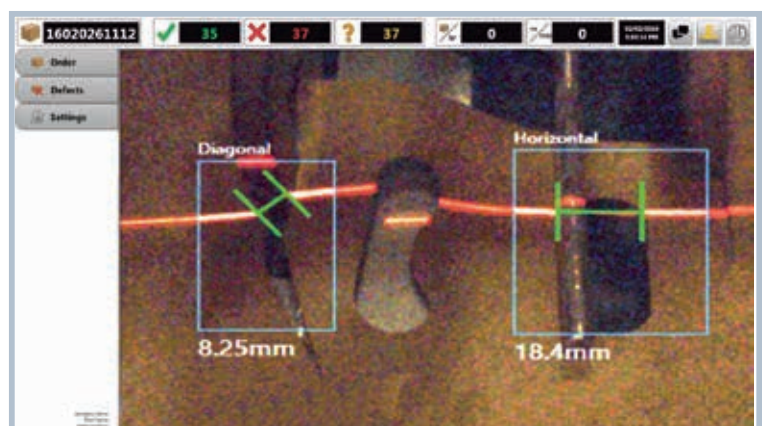
BrailleChek™ decodes braille into text for accuracy and validation at full production speed. Cartons with missing dots, poorly formed dots, and extra dots are removed from the machine. BrailleChek offers folding carton manufacturers the ability to provide customers with peace of mind while eliminating high costs associated with returned, defective product.

BrailleChek inspects from the printed side, disregarding the surface of the braille dots and all other print on the BrailleChek solution.



LASERCHEK

LaserChek™ checks perforations, cutouts, tip-on (placement), die-cuts, or any other point that requires a measurement or validation line. It provides real-time reassurance that 4, 6, 12, and 24-pack carrier handles are punched or knocked out every time.



GLUING SYSTEMS

ERO **TE**

ERO-TE HIGH-PRESSURE GLUING SYSTEM

ERO-TE high pressure gluing system has been designed for standard and extremely high-speed folder-gluer machines.



The ERO-TE System includes the following standard features:

- Control panel comes standard with 8 channels (16 or more channels available on request)
- High-pressure double-piston ERO® glue pump
- High-pressure ERO® flow regulator
- Digital proportional valve and air regulator group
- Low level detection system inside the bucket. Includes alarm
- Encoder with support and pulley, laser photo-eye, glue filter, glue and air hoses, pump support fitted with sliding device and cover
- Electromagnetic glue applicator type GTE-13/S
- Base plate fitted with wheels available as an option
- Glue bucket with 250 micron glue filter

Maximum speed of production: over 500 m/min.
Maximum error at 500 m/min: +/- 1 mm.
Dimensions: L = 400 mm, H = 1510 mm, W = 660 mm.
Weight: 60 kg

HIGH-PRESSURE GLUE PUMP

Double-piston ERO® glue pump
No pressure loss
Low maintenance & extra-high reliability
Driven by an electrical board
Easy seals replacement

All ERO high-pressure systems come with a double-piston glue pump. This pump has been specifically designed for the folding carton industry by ERO to tackle the pressure problems often inherent in other pumps. While most piston pumps on the market have a single piston, the ERO pump features two. The second piston begins its stroke before the first one has finished, thus avoiding any pressure loss.



ERO **TEPS**

ERO-TEPS

SIMPLIFIED LOW-PRESSURE GLUING SYSTEMS

ERO-TEPS low-pressure gluing system has been developed for high-speed folder-gluer machines.



High-speed production

Low maintenance & easy handling

Excellent reliability at high speeds

Dot application for glue savings

Leading technology at a competitive price

The ERO-TEPS System includes the following standard items:

- Standard 8-channel control panel (16 or more channels available on request)
- Low-pressure, double-diaphragm glue pump, directly installed on the glue bucket
- Low-pressure flow regulator
- Digital proportional valve and complete air regulator group
- Low level detection system inside the bucket. Includes alarm
- Encoder with support and pulley, laser photo-eye, glue filter, glue air hoses, pump support fitted with sliding device and stainless steel cover
- Electromagnetic glue applicator type GTE-13/S
- Glue bucket with 250-micron glue filter

Maximum speed of production: over 200 m/min.
Maximum error at 250 m/min: +/- 1 mm.
Dimensions: L = 410 mm, H = 1200 mm, W = 770 mm.
Weight: 25 kg

ERO **TEBS**

ERO-TEBS

LOW-PRESSURE GLUING SYSTEMS

The upgraded low-pressure version ERO-TEBS with structure includes the same important high-quality items as the high-pressure version. Available as an affordable option, it is equipped with a structure, a sliding device on the pump to guarantee an easy glue refill of the bucket, and a low glue level probe.



**Moving plate fitted with wheels not included in the basic package. Available as an option.*



ERO-TEMS

MEDIUM-PRESSURE GLUING SYSTEMS

ERO-TEMS medium pressure gluing system featuring a single piston pump. ERO-TEMS medium pressure gluing system features a single piston, and self-lubricating 5:1 ratio pump. It supplies multiple valves with consistent adhesive volume through all machine speeds.



- Low-maintenance & easy handling
- Maximum reliability at high speeds
- Dot application for glue savings
- Advanced technology at a competitive price

The ERO-TEMS System includes the following standard features:

- 8 channels control panel available, iPad as HMI, driver box and software
- Medium-pressure single-piston 5:1 ratio pump, directly installed on the glue bucket
- Electromagnetic glue applicator type GTE-13/S
- Low level detection system inside the bucket. Includes alarm
- Encoder with support and pulley, sensor, glue filter, glue air hoses, pump support fitted with sliding device and cover
- Only dot mode gluing pattern available

Maximum speed of production: over 350 m/min.
Maximum error at 350 m/min: +/- 1 mm.

**Optional aluminum structure and casters are not included in the ERO-TEMS basic package.*

**WE'RE RENOWNED
FOR OUR TECHNICAL SUPPORT
FROM INSTALLATION
TO ANY SPECIFIC CUSTOMER REQUEST**

HMI - HUMAN MACHINE INTERFACE

ERO control devices feature:

- Control panel with 8 channels is standard
- Up to 8 glue patterns configuration for each channel/glue applicator
- Mother board expansion available
- User-friendly operation

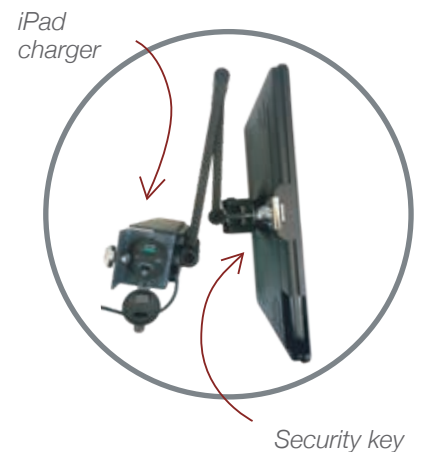


IPAD

The iPad is the upgrade to the standard/traditional control panels, allowing independent monitoring from any place.

The ERO iPad features an articulated arm that enables easy handling.

The support is fitted with charger and security key.



TOUCHSCREEN

The standard touchscreen features an intuitive interface to help the operator with the programming labor.

COLD GLUE APPLICATOR



ERO-13S/M COLD GLUE APPLICATOR

The GTE-13S and GTE-13M single and modular applicators can operate at the highest speeds. When working in dot mode, these non-contact electromagnetic guns can reach 210 m/min.

- Dot application for glue savings
- High precision and maximum cleaning
- Slides for automatic cleaning nozzles as optional

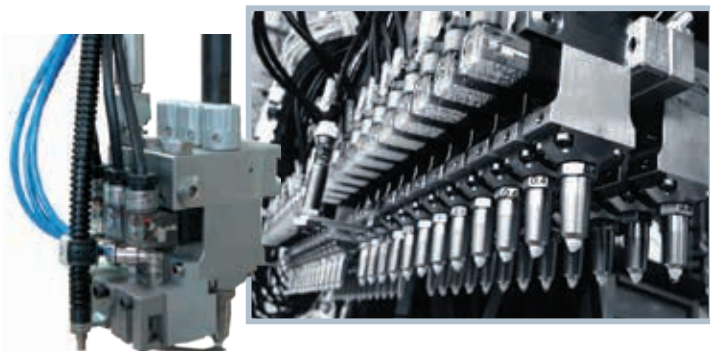
ERO electromagnetic glue applicators type GTE-13 feature ceramic stem spheres and nozzles that prevent and inhibit glue blockage.

Sliders for automatic cleaning are available as an option. When the machine detects no box for more than 1 second, sliders automatically close and clean the nozzle. A laser photo-eye is installed on each glue applicator. Coils available in 24 VDC and 6 VDC

GTE-13 guns can work in dot mode to save a considerable amounts of glue while preserving the bonding quality.



- Maximum speed:** 500 cycle/sec
- Dimension without support or accessories:** L = 52mm, H = 122mm, W = 20mm
- Weight without support or accessories:**
 - GTE-13/S: 0,300 Kg
 - GTE-13/M: 0,320 Kg
- Power:** 5 W
- Standard coil:** 6 VDC
- Standard nozzle:** 1 hole \varnothing 0.4 mm (available size: 0.6 and 0.8 mm) and 2 holes nozzle
- Maximum glue pressure:** 28 bar
- Glue viscosity range:** Min. 500 mPas, Max. 1200 mPas



GTE-13S distributors can apply traditional beads or dots to reduce glue consumption

Distance between distributors at GTE-13M can be adjusted from over 20 mm

HOT MELT APPLICATOR

ERO-112H

HOT MELT APPLICATOR

GTE-112H electromagnetic applicator has been designed for hot melt applications working at high speeds.

Maximum speed: 300 cycles per second

Highly conductive thermal material

Dot application for glue savings

Slides for automatic cleaning of nozzles

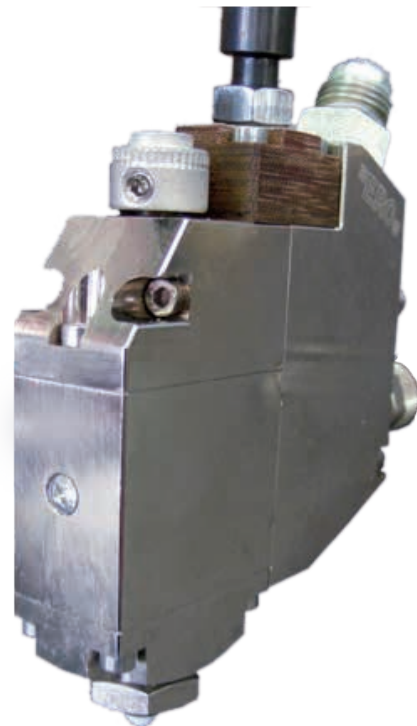
Ceramic sphere and nozzle

Made of a highly conductive thermal material and ceramic stem sphere and nozzle, the GTE-112H applicator prevents glue blockage within and outside the nozzle.

GTE-112H dot distribution mode allows considerable glue savings. The dispensed glue amount can be adjusted by setting the knob on the head of the gun.

The hot melt glue distributor can be driven by the ERO® standard control panel and installed in any new or existing system.

As an option, an auto-cleaning slide can be installed on this glue applicator. Each hot melt glue distributor is provided with an adjustable bracket.



Maximum glue pressure: 60 bar
Dimension without support or accessories: L = 75mm,
W = 20mm, H = 22mm
Weight: 0,670 Kg
Power: 5 W
Heater power: 150 W
Standard coil: 7 VDC, 5W.
Standard nozzle: 1 hole Ø 0.4 mm
(available size: 0.3, 0.6 and 0.8 mm)
Maximum glue pressure: 60 bar
Maximum glue viscosity: 2000 mPas

Suggested viscosity range: from 500 to 1000 mPas



QUALITY INSPECTION SYSTEMS



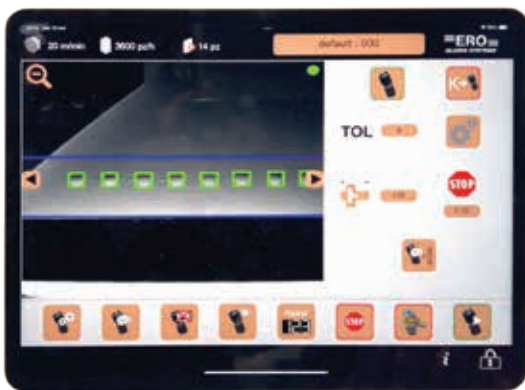
ERO-DL

INTELLIGENT GLUE INSPECTION SYSTEM

Equipped with artificial intelligence, the ERO-DL adhesive inspection system with deep learning technology allows automatic parameter setup for each carton.

ERO-DL is compatible with any gluing system in the market. The camera requires no mechanical tuning; it comes fully equipped with illuminator and is ready for mounting.

The new ERO-DL camera can work with virtually any type of cardboard, regardless of lighting conditions, material and colors. Unlike some systems that report failures or require complex lighting setups for sharp image capture, ERO-DL can analyze what the human eye sees.



ERO-DL seamlessly integrates the control of cold glue applicators and pattern inspection into a single, intuitive iPad interface. This innovative system not only facilitates remote connectivity for controlling and checking parameters from any location but also enhances performance through customized remote training on special formats.

Additionally, the iPad streamlines the communication of automatic glue patterns between the gluing system and ERO-DL, ensuring a cohesive and efficient workflow.

- AI applied to carton manufacturing
- Minimize operator programming tasks
- Reports for deep analysis
- Compact size
- No UV additives required

ERO-DL is itself capable of finding any glue pattern with no need of UV-additives and regardless of:

- Printings within the glue pattern area
- Reflective surfaces
- Crease lines, box and flap edges
- Grooves for helping glue penetration or any shadow



WATCH VIDEO

ERO-DL SYSTEM

> <https://go.valcomelton.com/learn-more-ERO-DL>

DEEP-LEARNING TECHNOLOGY

A NEW GENERATION OF INSPECTION SYSTEMS
 FITTED WITH ARTIFICIAL INTELLIGENCE

The new ERO glue inspection systems, powered by deep learning technology, are trained from thousands of glue patterns. This approach avoids the need for system and parameter setups.

ERO's technology for glue pattern, code, and antimix inspection guarantees flawless cartons are delivered to customers, every time.

STATE-OF-THE-ART HMI

- Re-designed graphics
- Ability to manage both glue and inspection system
- Easy to learn
- Visualization of up to 4 different inspected areas



High-speed technology
 Control of up to four cameras
 Compatible with any market standard
 New improved interface

IMPROVED COMMUNICATION

- ERO-DL shares data with ERO gluing systems
- Communication with automatic pattern recognition
- Remote access
- Can save up to 500 img/camera

EXPANDABLE PLATFORM

Capable of hosting additional cameras for:

- Glue inspection
- 1D/2D barcodes
- Antimix



VERSATILE BRACKET

- Operator setup not required
- Valve and camera integration
- Easy installation



ACCESSORIES

ERO-DL may be equipped with:

- Alarm beacon (system enable/disable, fault detection)
- Stop signal if number of faulty boxes (within 10) is detected
- Rotary ejector, marker, kicker



ERO-BC BAR CODE INSPECTION SYSTEM

The ERO-BC system inspects barcodes printed on various packaging materials, including those with a white background. It meticulously verifies the presence of the correct barcode on each individual package. ERO-BC checks both black & white and color codes.

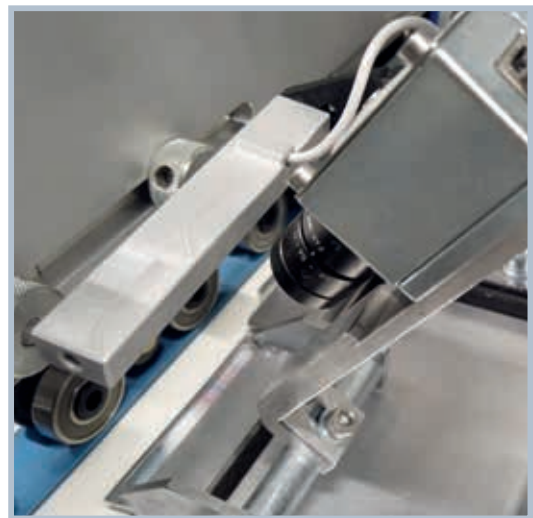


Inspects black & white and color codes
Minimize operator programming tasks
Reports for deep analysis

Black & white and color camera system features:

- 640X480 pixels resolution camera, over 120 frames/sec.
- Maximum speed over 400 m/min

Both camera and system are equipped with support, illuminator, photo-eye, and cables. All barcode reader systems are monitored by an iPad.



ERO-BR BRAILLE INSPECTION SYSTEM

ERO-BR verifies that every braille code is correct and conforms to a previous referenced sample.

In case a faulty box is detected by the system, the image can be displayed by pressing the appropriate key. Up to 200 images can be saved by the system. ERO braille inspection systems are monitored with a 12" touchscreen.



ERO-BR system features the following items:

- Black & White camera with a 640X480 pixels resolution, runs over 90 frames/second
- High-efficiency stroboscopic flash camera
- Illuminator driver
- Encoder divider
- Low noise
- Extractor, kicker and marker drivers available



ERO-SIT
 GLUE INSPECTION SENSOR

ERO-SIT sensor verifies that a correct glue pattern has been applied to every carton and guarantees a perfectly glued box.

Based on a moisture sensor concept, the system analyzes the level of humidity in the glue applied on each box and compares it to the set tolerance range to identify good and non-conforming boxes. Additionally, it can identify excess, shortage and absence of glue on the boxes.

- High-speed production: over 300 m/min
- Complete underneath installation
- Compact design



ERO-WSI
 WINDOW INSPECTION SENSOR

ERO-WSI checks that every film is correctly placed on the window box, detecting missing films, holes and bad positioning.

- Extra high-speed production
- Control 100% guaranteed
- Leading technology at a competitive price
- Smart and user-friendly control panel
- Compact design



The system can be equipped with 2 or 3 photo-eyes.

MARKER & EJECTOR
 FOR FAULTY BOXES

As standard, all the ERO camera and sensor inspection systems can stop the line or feeder after a number of faulty boxes previously set has been reached. Optionally, marker device, ejector and kicker keep the production line free from faulty products. Available on request.



Box marker & valve



Ejector for small boxes



Ejector

Global Headquarters

Cincinnati, USA
+1.513.874.6550 | info@valcomelton.com

The Americas, Manufacturing, Sales & Service Centers

Ciudad de Mexico, Mexico
+52.55.627831727 | mexico@valcomelton.com

Bogota, Colombia
+57.313.421.0926 | colombia@valcomelton.com

Sao Paulo, Brazil
+55.11.3071.2117 | brazil@valcomelton.com

ClearVision Technologies
Vancouver, Canada
+1.604.998.4012 | canada@valcomelton.com

GMS-VanSco - USA West Coast
Petaluma, CA, USA
+1.707.285.3392 | inquiry@gmsvansco.com

Asia - Pacific Manufacturing, Sales & Service Centers

Bangalore, India
+91.80.46553300 | india@valcomelton.com

Shanghai, China
+86.592.591.7854 | china@valcomelton.com

Singapore
+65 850 95355 | singapore@valcomelton.com

Quezon City, Philippines
+63 917 535 0891 | philippines@valcomelton.com

Jakarta, Indonesia
+62 811 9112872 | indonesia@valcomelton.com

Tokyo, Japan
+81 80 7347 9242 | japan@valcomelton.com

Ho Chi Minh City, Vietnam
+84 938 828 875 | vietnam@valcomelton.com

Malaysia
+60 1114 344 981 | malaysia@valcomelton.com

Europe, Middle East & Africa Manufacturing, Sales & Service Centers

European Headquarters
Orkoien, Spain
+34 948 321 580 | spain@valcomelton.com

Düsseldorf, Germany
+49 211 984 798-0 | germany@valcomelton.com

Brescia, Italy
+39 030 2732544 | italy@valcomelton.com

Nieuw-Vennep, The Netherlands
+31 252-673673 | benelux@valcomelton.com

Telford, England, UK
+44 1952-677911 | uk@valcomelton.com

Dlugoleka, Poland
+48 71 889 04 50 | poland@valcomelton.com

Fleurieu-sur-Saône, France
+33 (0) 4 75 78 13 73 | france@valcomelton.com

Budapest, Hungary
+36 1-214-4705 | hungary@valcomelton.com

Prague, Czech Republic
czech@valcomelton.com

Istanbul, Turkey
+90 212 327 99 71 | turkey@valcomelton.com

Sharjah, UAE
+971.521305960 | uae@valcomelton.com

Riyadh, Saudi Arabia
+966 544659139 | saudiarabia@valcomelton.com

Lagos, Nigeria
+234 812 379 1199 | nigeria@valcomelton.com

ERO s.r.l
Brescia, Italy
+39 030 2731503 | info@ero-glucers.com

Direct offices and authorized distributors across 96 locations worldwide



ALL LOCATIONS



Adhesive Dispensing & Quality Inspection Systems